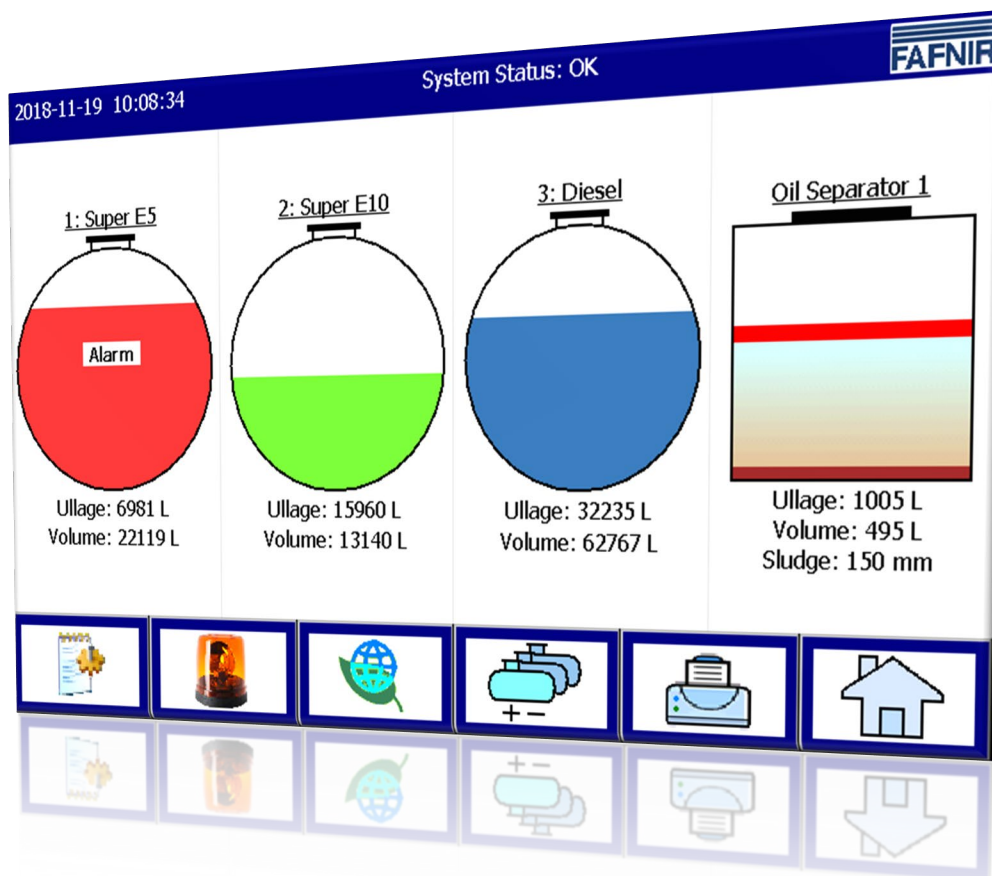


VISY-X

END OF LIFE

VISY-SoftView V 1.9.4 Administrator
for VISY-Command GUI and VISY-View Touch



Edition: 2023-11
Version: 9
Art. no.: 350144



Table of contents

1	Introduction.....	1
1.1	Safety instructions	2
2	Modules.....	3
2.1	VISY-SoftView Starter	3
2.2	VISY-SoftView.....	3
2.3	Menu structure.....	3
2.4	System-wide functions and function keys	3
3	Configuration	6
3.1	Configuration Menu.....	6
	Access Configuration.....	6
	Function keys.....	6
3.1.1	Products.....	7
3.1.2	Audio Volume.....	9
3.1.3	Software update	10
3.1.4	Tank options	11
	Tank shape.....	12
3.1.5	Language.....	13
3.1.6	Database care.....	14
3.1.7	System options	15
3.1.8	Static Leakage Detection (SLD)	16
	Start times and duration.....	16
	Alarm limit value.....	18
	Tank data.....	19
	Functionality of SLD alarms.....	19
	Alarm end	20
	SLD reports.....	20
	SLD Data Backup	20
	SLD alarm printout and e-mail.....	21
3.1.9	E-mail Alarm Recipients.....	22
3.1.10	Printer options ("Printer opt.").....	26
3.1.11	SMTP Server	28

Network Info	28
Configuration of the SMTP server	29
Sample configuration with GMX.....	31
Email process	31
3.1.12 Password.....	32
3.1.13 Logging.....	34
3.1.14 System	35
3.1.15 Time-controlled reports	36
3.1.16 Oil separator.....	37
3.1.17 Users.....	38
3.1.18 Control panel ("Ctrl panel").....	39
Host name.....	40
Network settings (IP configuration).....	41
Turn off the backlight	43
3.1.19 Save Ctrl.....	45
4 List of figures	46

© Copyright:

Reproduction and translation are permitted only with the written consent of the FAFNIR GmbH. The FAFNIR GmbH reserves the right to make product alterations without prior notice.

1 Introduction

The display of the FAFNIR products VISY-Command GUI and VISY-View Touch can be used as an alternative to a petrol station computer for the representation and evaluation of tank data. The software VISY-SoftView is used as firmware for the display.

The tank data, delivery data and various alarms are displayed on a coloured TFT display. All functions can be reached via the touch screen user interface. Optionally, a printer can be connected to the serial interface. Alarms are signalled on the display and acoustically with a buzzer.


This documentation describes the configuration of VISY-SoftView as administrator. For the use of **VISY-SoftView as a user**, see following documentation:

 VISY-SoftView User Guide, art. no.350026

For the use of **VISY-SoftView with Oil Separators**, see following documentation:


 VISY-SoftView Oil Separator, art. no. 350193

VISY-SoftView obtains the values, alarms, product data and configurations from the central unit VISY-Command. For installation and operation of the VISY-Command GUI and the VISY-View Touch, see following documentations:

 VISY-Command..., art. no. 207184

 VISY-View Touch, art. no. 350055

The VISY-Command must be configured with the VISY-Setup configuration software. For instructions on how to configure with VISY-Setup, see following documentation:

 VISY-Setup V4..., art. no. 207158

1.1 Safety instructions

The VISY-SoftView software is intended for use in petrol stations. The software is used to evaluate filling levels and to control tanks and their supply pipes. Use the system exclusively for this purpose. Please observe and follow all product safety notes and operating instructions. The manufacturer accepts no liability for any form of damage resulting from improper use.

VISY-Command GUI and VISY-View Touch, on which the VISY-SoftView software application is installed, have been developed, manufactured and tested in accordance with the latest good engineering practices and generally accepted safety standards. Nevertheless, hazards may arise from their use.

The following safety precautions must be observed to reduce the risk of injury, electric shocks, fire or damage to the equipment:

- Do not change or modify the system or add any equipment without the prior consent of the manufacturer.
- Only use original parts. These comply with the technical requirements specified by the manufacturer.
- The installation, operation and maintenance of the VISY-Command GUI and VISY-View Touch with VISY-SoftView software must be carried out by expert personnel only.
- Operators, installers and service technicians must observe all applicable safety regulations. This also applies to any local safety and accident prevention regulations which are not stated in this manual.

The following safety information must strictly be observed:



The touch screen may be operated only by finger or with specially designed touch pins. The use of pointed objects (e.g. screwdrivers, pens, ...) may damage the touch screen!

Useful tips:



Useful tips and information in this user guide you should observe, appear in italics and are identified by this symbol.

2 Modules

The VISY-SoftView software consists of the 2 modules

- VISY-SoftView Starter and
- VISY-SoftView

2.1 VISY-SoftView Starter

The VISY-SoftView Starter module is the start-up and control program. During start-up phase, the user is presented the start of the main program VISY-SoftView, and during operation the VISY-SoftView main program is monitored by VISY-SoftView Starter.

2.2 VISY-SoftView

The VISY-SoftView module is the display and report program for the tank information of the VISY-X system.

2.3 Menu structure

The main window directly shows tank or oil separator information graphically and allows access to the function keys.

2.4 System-wide functions and function keys



Individual functions of the main window can be password-protected, see chapter "[Password](#)".



Tapping on certain fields will automatically close all open windows and the application returns to the main window.



The display of the measured values is continuously updated, so that current values are displayed at all times.









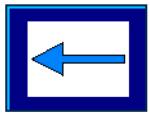

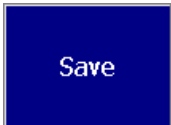

The representation of the measured values differs depending on the configuration.


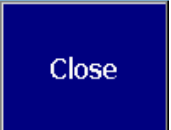



Measured values with the suffix "TC" are temperature compensated values. Measured values without the suffix "TC" are non-temperature compensated values.



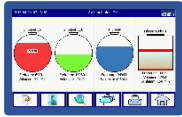
Reports and alarms can be sent by e-mail, if these functions have been configured, see chapter "[SMTP-Server](#)".

Button	Description
	<p>The frames of the buttons can have 2 different colours: a red frame indicates a changed configuration which was not saved yet,</p>
	<p>a blue frame indicates that the configuration has been permanently stored in the database.</p>
	<p>With the function key "Home" the main window is opened.</p>
	<p>The function key "Printer" prints out the values displayed in the current window in tabular form. If no printer has been configured, the key has no function.</p>
	<p>The function key "Tanks" changes the display to show additional tanks / Oil Separators.</p>
	<p>With the function key "Speed-Button" you can quickly switch to the other half of the window without having to use the scroll bar. The arrow shows the jump direction (up / down).</p>
	<p>The arrow key can be used to delete the last entered digit.</p>
 	<p>With "OK" the selected settings are accepted. The displayed window will be closed. With "Save" the changes are stored permanently in the database.</p> <p>Changes must be confirmed with "OK" and then saved with "Save"!</p>
	<p>Changes are discarded. The window will be closed.</p>

Button	Description
	<p>Unsaved changes ("red frame") are discarded. The previous values ("blue frame") are displayed.</p>
	<p>Closes the displayed window and returns to the previous view.</p>
	<p>Check marks are set or deleted by tapping the corresponding option field or the associated lettering.</p>

3 Configuration

3.1 Configuration Menu



Main window



System functions



Configuration menu

Configuration of VISY-SoftView is done in the configuration menu.

Access Configuration

The configuration menu is password protected. The password is in the factory setting (configurable) "22765". Enter the Password and confirm with "Enter". For each entered digit an "asterisk" is displayed. When the correct password has been entered, the user can access the configuration menu.

Entering an incorrect password or tapping the "Cancel" button closes the dialogue box and the program returns to the last displayed window.

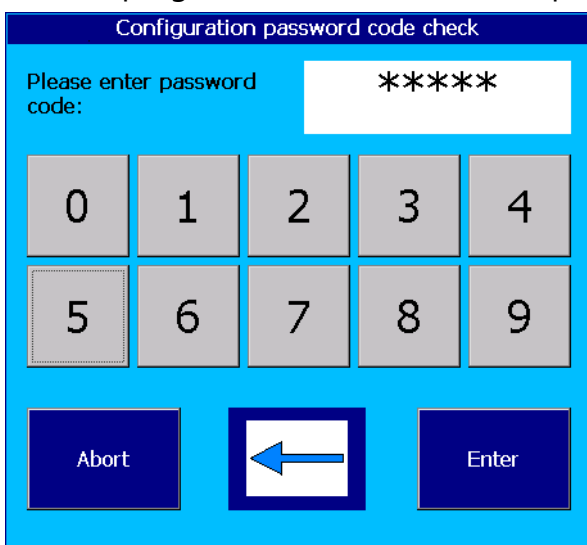


Figure 1: Password entry for configuration menu

Function keys



The function keys of the configuration menu are linked to the corresponding chapters in the PDF version of this documentation.

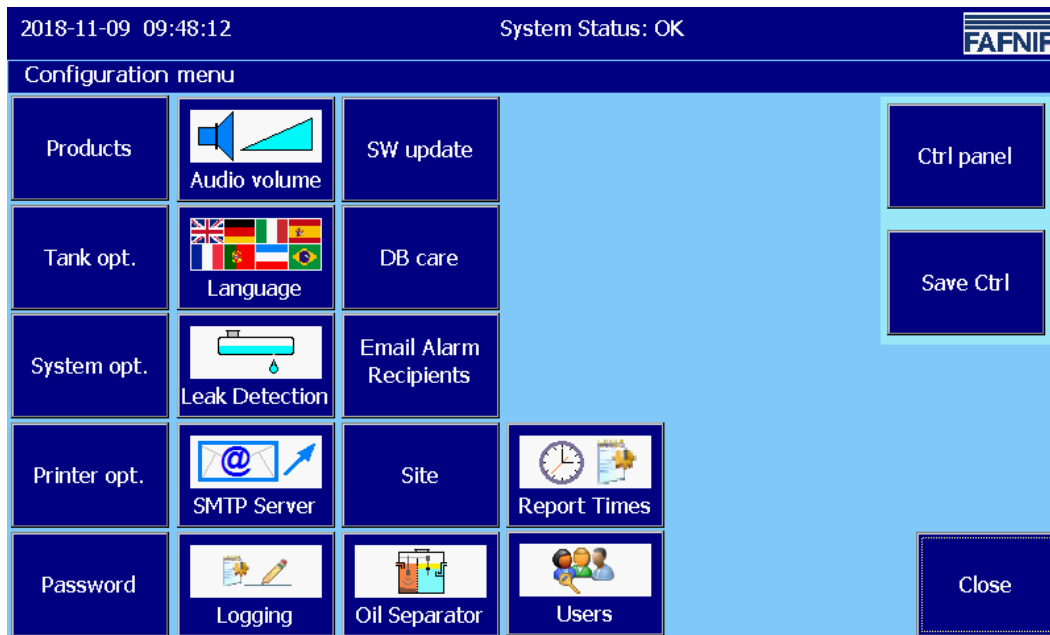



Figure 2: Configuration Menu

3.1.1 Products



Main window -> System functions -> Configuration -> Products

This menu is used to enter the names of the products (1 ... 16) and their colours for displaying with VISY-SoftView.

 *The VISY-Setup settings will thereby not be changed.*

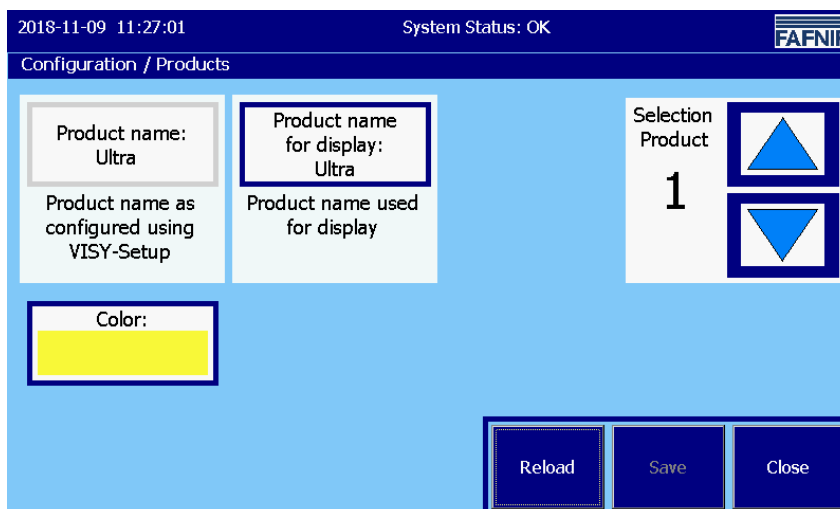


Figure 3: Products



This function opens the window for selecting the colour. The colour can be defined either with a colour table or with the RGB values. After selecting the new colour, it is displayed in the line "New":

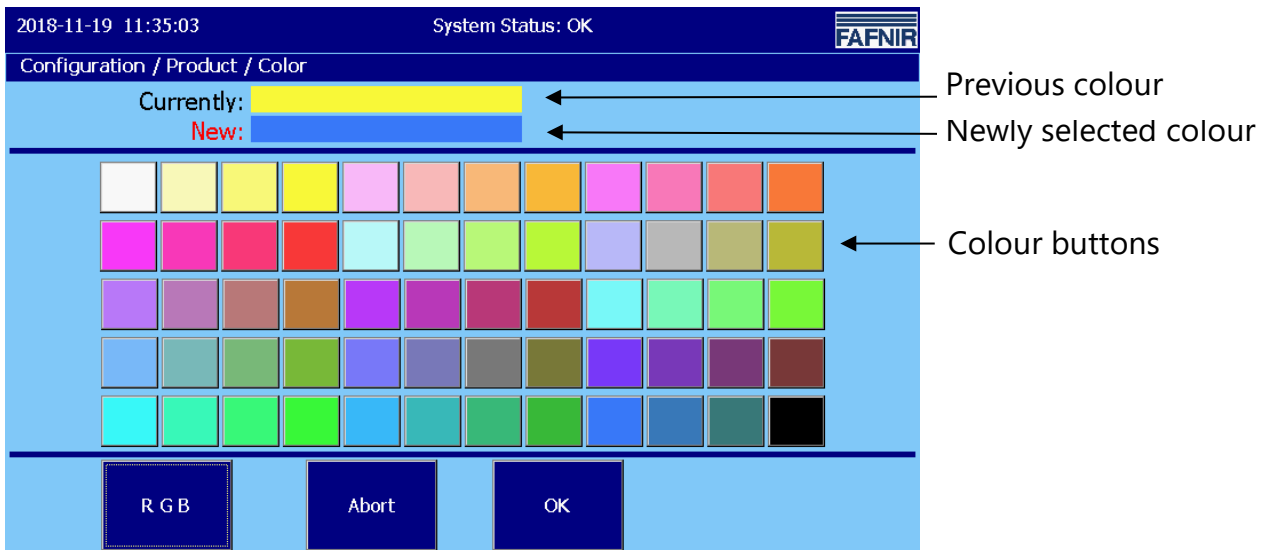


Figure 4: Products / colour table

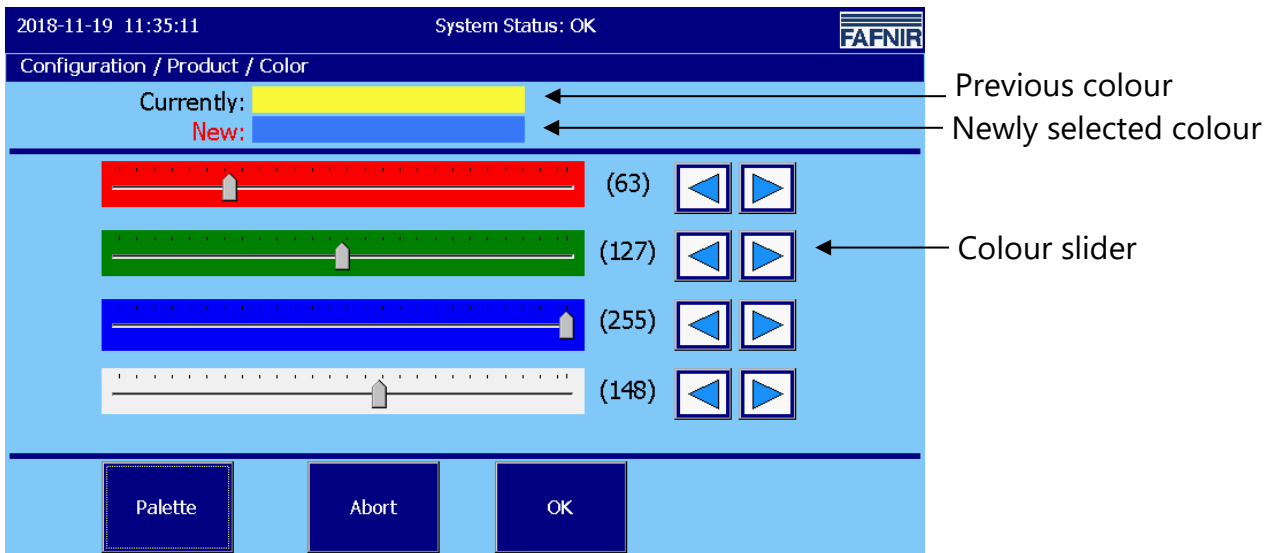


Figure 5: Products / Colour - RGB



3.1.2 Audio Volume



Main window -> System functions -> Configuration -> Audio Volume

This function allows you to set the volume of alarms.

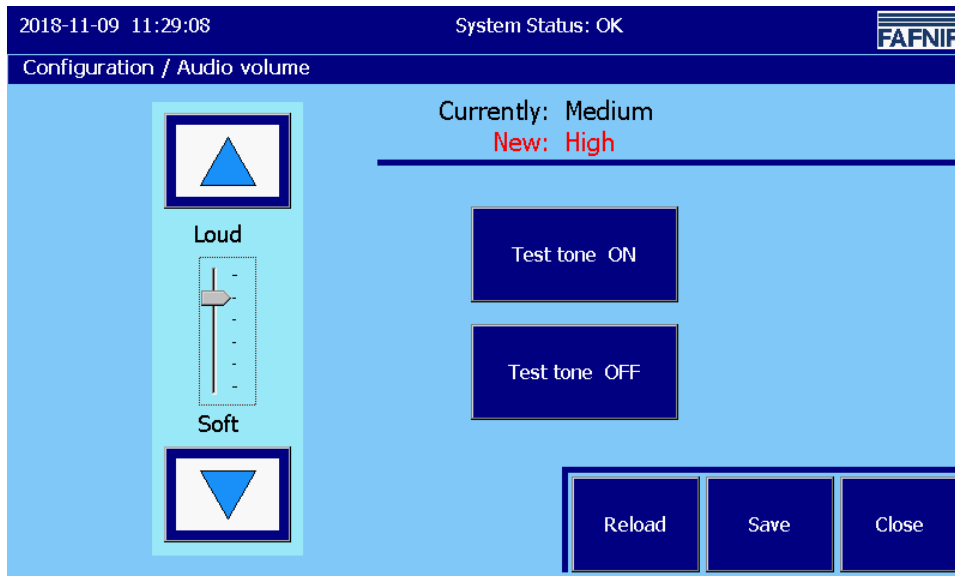


Figure 6: Volume


The volume is adjusted with the arrow keys.

A change is displayed both in the line "New:" and graphically with the slider.


Use the Test Tone (ON / OFF) buttons to turn the alarm tone on or off for a test.



3.1.3 Software update

 Main window -> System functions -> Configuration -> SW update

The software update function allows to install a new version of VISY-SoftView on the display module.

 *Prerequisite for the software update is a USB stick, which is to be plugged in the back of the embedded computer ("CUPID"). To do this, the housing of the VISY-Command GUI / VISY-View Touch must be opened.*

If you click the Start button, the software update procedure begins. The window shows the intermediate steps, as well as the final result.

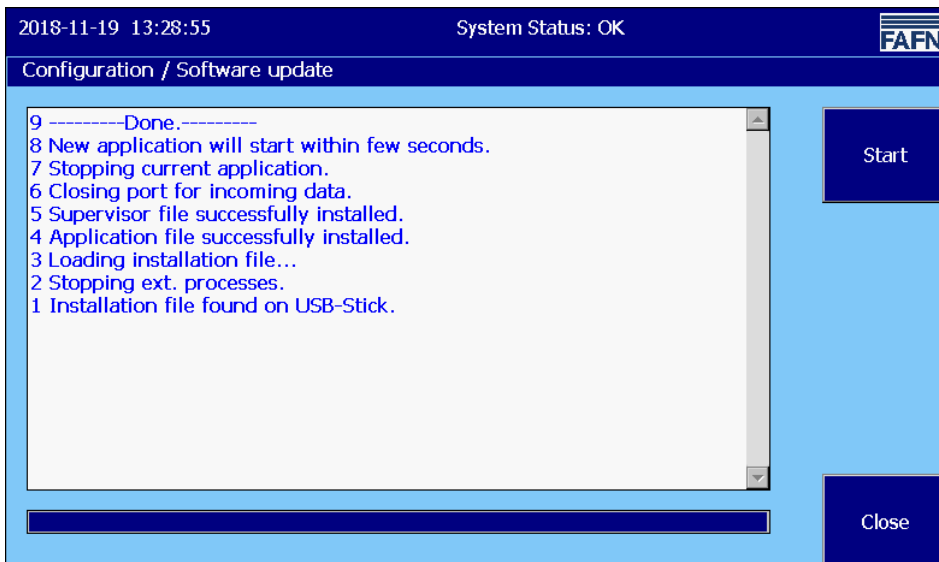


Figure 7: Messages at successful software update

The displayed lines are numbered consecutively in descending order with the latest displayed line at the top of the list.

After successful installation, the application is restarted. During this, the "VISY-SoftView Starter" window is briefly displayed. The application restart can take up to a minute.



3.1.4 Tank options

Tank opt.

Main window -> System functions -> Configuration -> Tank opt.

This function opens the window for the

- Display of the tank usage (Tank / Oil separator) and
- Adjustment of the tank shape (cylindrical lying / cylindrical standing / rectangular) of the selected tank (arrow up / down).

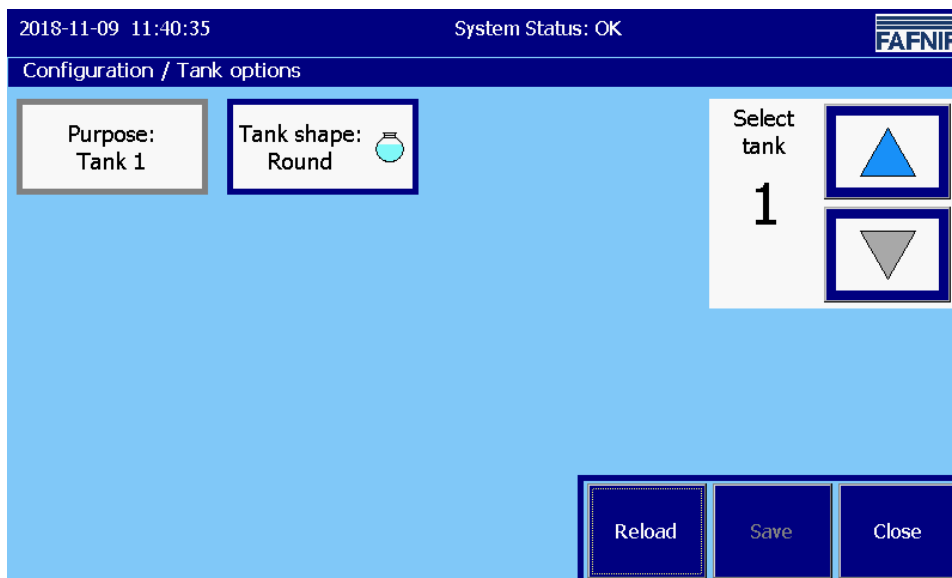


Figure 8: Tank options

The usage as an "Oil separator" is described in the following documentation, see:



VISY-SoftView Oil Separator, art. no. 350193

Tank shape

For each individual tank, a specific tank shape can be set.

The following tank shapes are available:

- Cylindrically lying (Round, standard)
- Cylindrically standing (Cistern)
- Rectangular (Rectangle)

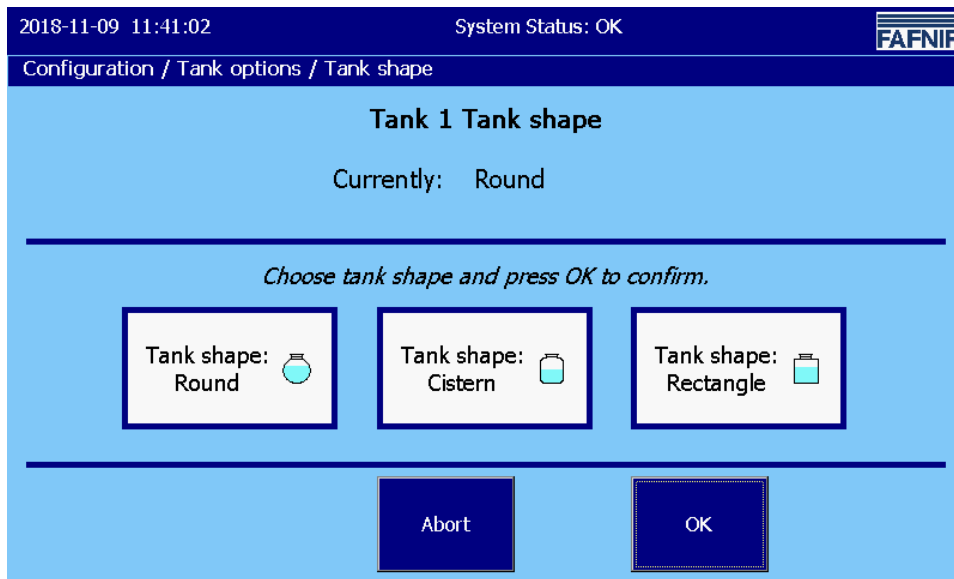


Figure 9: Tank Options / Tank Shape



3.1.5 Language



Main window -> System functions -> Configuration -> Language

This function allows you to set the system language for the display and the printout.

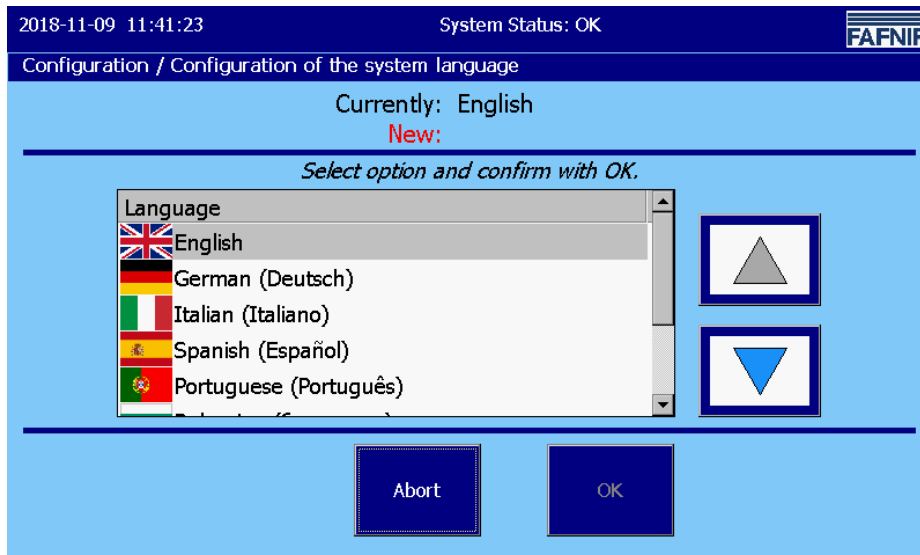


Figure 10: Language

When opening this function, the currently active language setting is displayed, in the selection list the corresponding line is highlighted by a dark background. A choice of the following languages is available:

- English
- German
- Italian
- Spanish
- Portuguese
- Bulgarian
- French
- Russian

A new language setting can be selected both by using the arrow keys and by touching the corresponding line and will be confirmed with the "OK" button.



Saving and activation of the new language setting will be done after a confirmation prompt ("yes"/"no") and a reboot of the system.



3.1.6 Database care



Main window -> System functions -> Configuration -> DB care

This function enables the user to delete old database entries from the internal memory. The data of the SD card cannot be deleted.

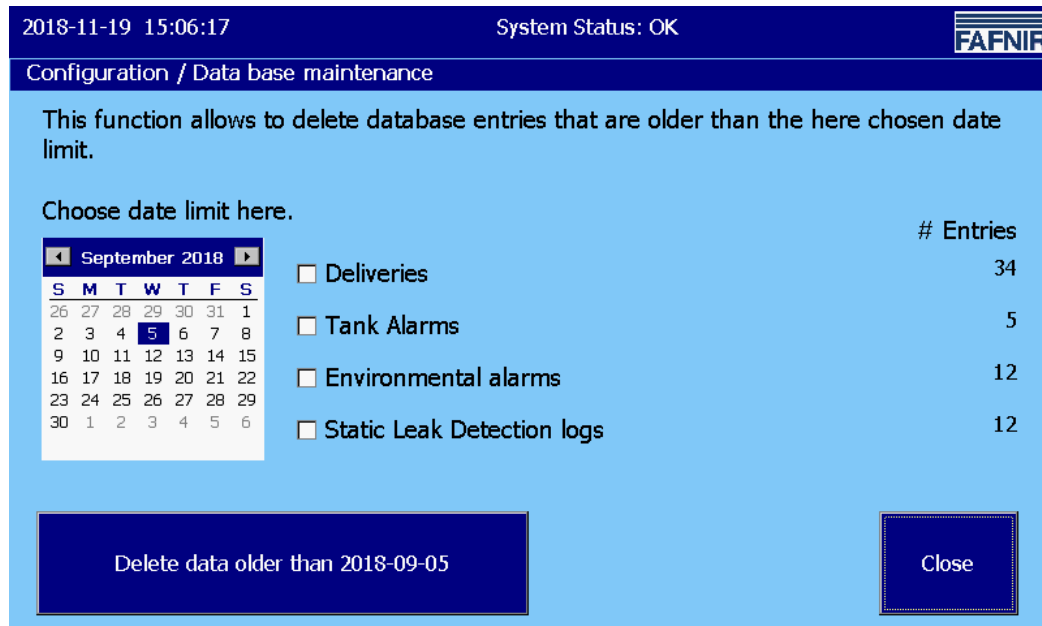


Figure 11: Database maintenance

In this menu, database entries can be deleted up to the day selected in the calendar field. The time limit selected is displayed in text form on the large button "Delete ...".

Database entries can be deleted for the following tables: Deliveries, tank alarms, environmental alarms, and static leakage (detection) test logs

When the "Delete ..." button is pressed, all entries of the selected tables older than the defined time limit are deleted.



The Database-entries are internally saved for a maximum of 75 days!



The data can be stored permanently on an SD card (maximum 2 GB) (see [Logging](#)).



3.1.7 System options

System opt. Main window -> System functions -> Configuration -> System Opt.

This function allows the setting of display and printing options.

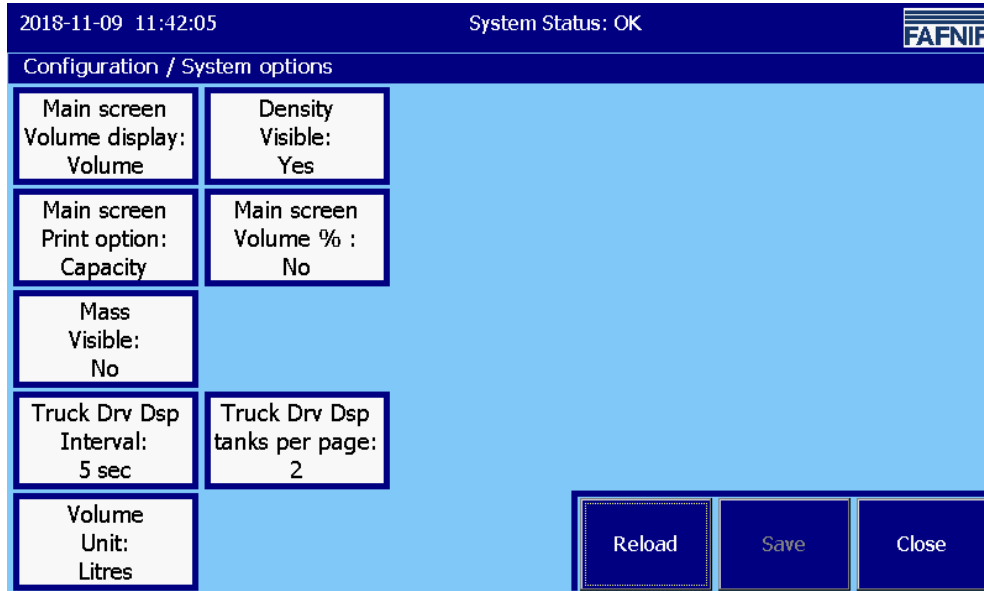


Figure 12: System options

Main screen Volume display

Display of tank content as "volume" or "volume TC" (temperature-compensated).

Density, visible

Display and printout of the density values (yes/no).

Main screen Print option

Printout either with capacity or product name.

Main screen Volume %

Display and printout of the volume in percent (yes/no)

Mass visible

Display and printout of the mass (yes/no).

Truck Drv Display Interval

Cyclic change of the tank display in the "Truck Drv Display" operating mode. The interval can be set for a range of 5 ... 99 seconds.

Truck Drv Display tanks per page

Number of simultaneously displayed tanks (2 ... 8) in the "Truck Drv Display" operating mode.

Volume Unit

The function "Volume Unit" (litres/gallons) is only available with the language setting "English" or "Spanish".

 Configuration menu

3.1.8 Static Leakage Detection (SLD)



Main window -> System functions -> Configuration -> Leak Detection

The Static Leakage Detection (SLD) function lets you enter start times, duration, and the SLD alarm limits.



The Static Leakage Detection is used to check the tank levels for possible losses caused by leakage or theft while the station is closed (e.g. overnight)!

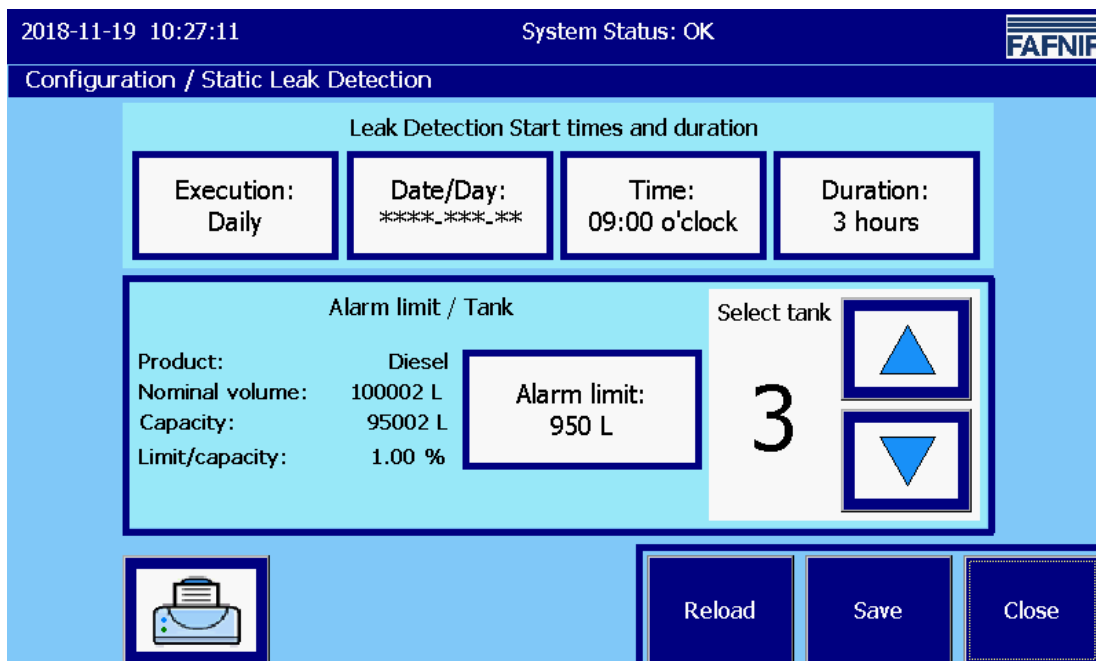


Figure 13: Static Leakage Detection

Start times and duration

Execution: The following intervals are available for selection:

- None
- Once (at the set time)
- Daily
- Weekly
- Monthly
- Yearly

When selecting the "Once", "Weekly", "Monthly" and "Yearly" intervals, the entry in the "Date/Day" window is also required.

Date/Day:

Default setting for the start time is the next following day.

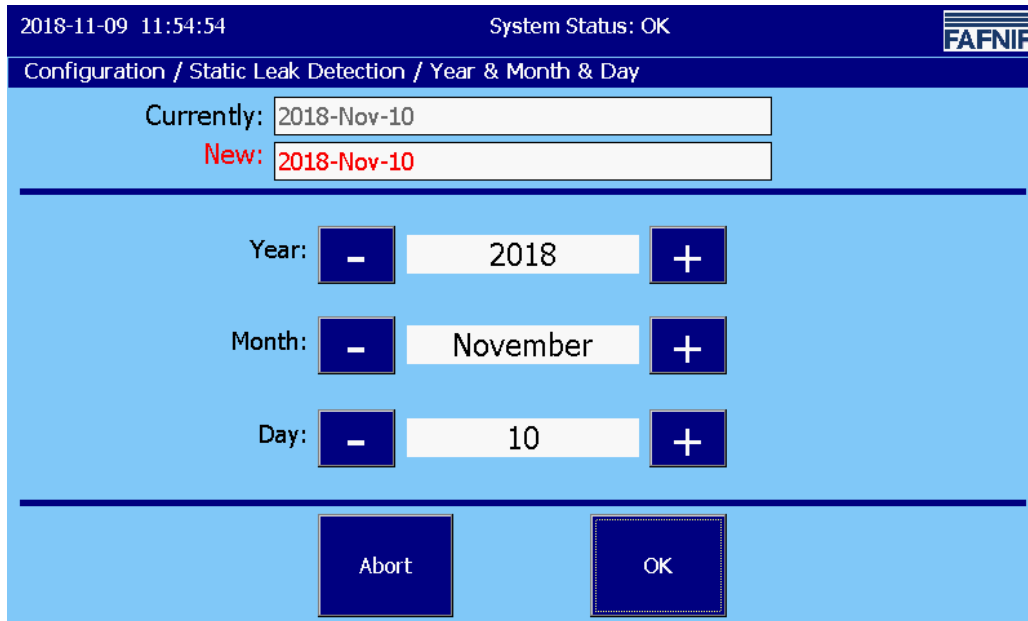


Figure 14: Static Leak Detection, Date / Day

Time

The time is entered in hhmm format in 24-hour mode.

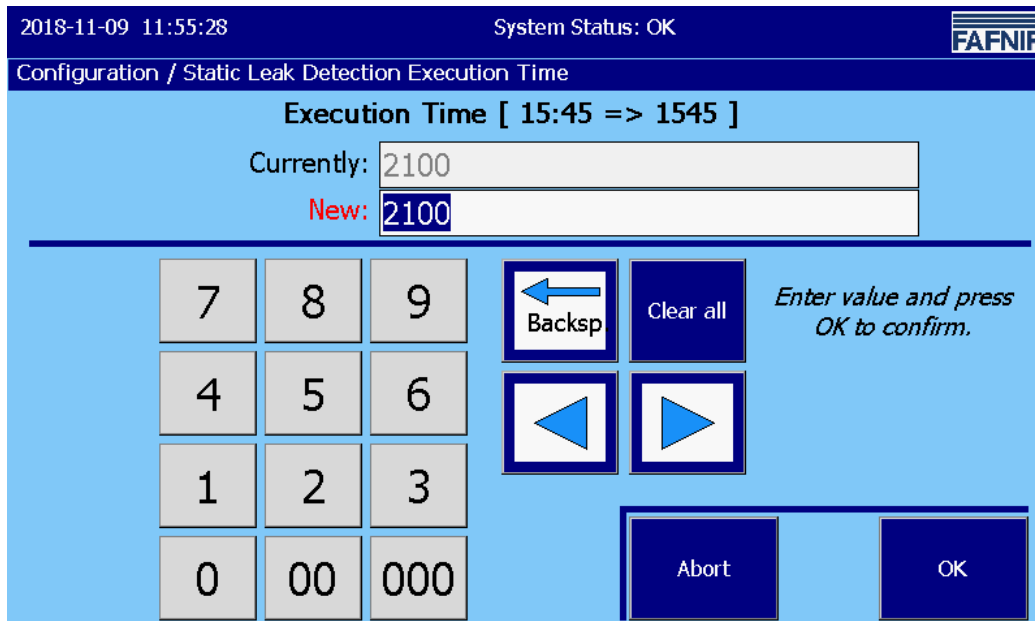


Figure 15: Static Leak Detection / Execution Time

Duration

The SLD can be set for a control period of 2 – 24 hours.

The minimum duration is 2 hours.

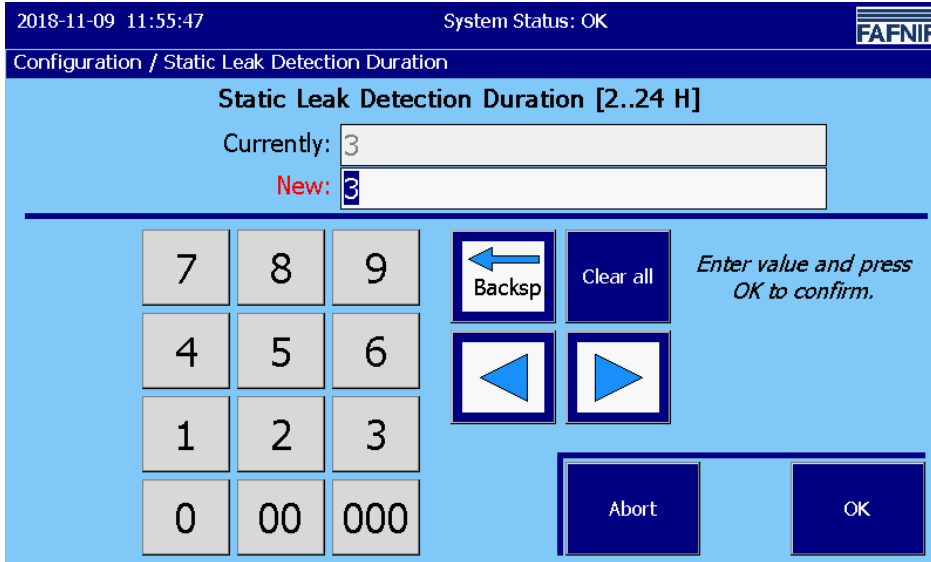


Figure 16: Static Leak Detection / Duration

Alarm limit value

With the button "alarm limit" an alarm value of the SLD can be set for each tank in whole litres / gallons. If this limit value is exceeded, the alarm of the SLD is triggered (see following figure, e.g. 950 L):

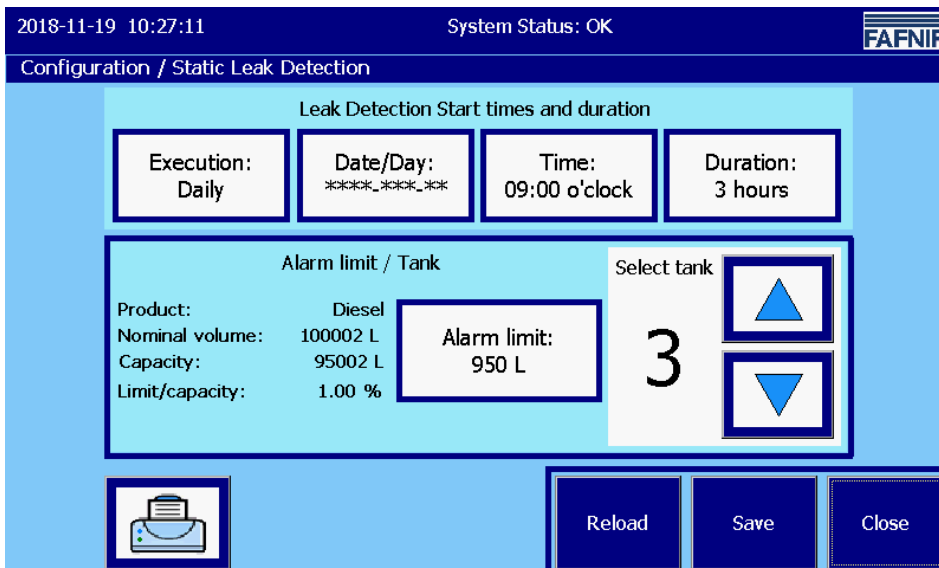


Figure 17: Static Leak Detection / Alarm limit value

Tank data

On the left side, some more data are displayed for the selected tank:

- Product
- Nominal volume
- Capacity (maximum permissible filling volume for safe operation)
- Limit / capacity in percent (limit value in relation to capacity)

If the selected tank doesn't exist, the parameters are shown with a hyphen "-" and the limit button shows a grey frame.

Functionality of SLD alarms



SLD alarms are only registered and triggered during the set interval of the SLD. A maximum of one SLD per tank and day is executed.

For registration of an SLD alarm, the temperature-compensated ("TC") volumes of tanks are used.

An SLD alarm is registered when the measured TC volume falls below the TC volume of the SLD start for more than the alarm threshold.

Example:

At the beginning of the SLD a TC volume of 91000 litres is registered.

The SLD runs for 3 hours.

An SLD alarm threshold of 950 litres has been set.

Half an hour after beginning the SLD, the system determines a TC volume of less than 90050 L. The TC volume has fallen below the alarm threshold.

An SLD alarm is triggered.

An SLD alarm is registered and handled analogously to the other level alarms:

- Database registration (start, confirmation, end)
- Indication and Confirmation in the alarm dialogue window (with alarm sound)
- Printout, automatically (if configured)
- Indication in the tank details and inside the alarm window
- E-mail transmission (in category "level alarms", if configured)

Alarm end

To terminate an SLD alarm, the next SLD must be run through without generating an SLD alarm.

SLD reports

The SLD reports can be issued together for all tanks or only for individual tanks.

SLD Data Backup

The following readings and calculations of the SLD are stored:

- Tank number
- Date (start, stop)
- TC volume (start, stop, difference)
- Product level (start, stop, difference)
- Temperature (start, stop, difference)
- Water level (start, stop, difference)



The data is saved internally for a maximum of 75 days.

SLD alarm printout and e-mail

Printout example

```
Alarm Start 26/04/2013 18:30
Tank 4      BioDiesel
Alarm:      Stat.Leak Detection
Start Date: 26/04/2013 18:30:25
-----

Alarm Confirmed 26/04/2013 18:30
Tank 4      BioDiesel
Alarm:      Stat.Leak Detection
Start Date: 26/04/2013 18:30:25
Confirmed:  26/04/2013 18:30:37
-----

Alarm Terminated 26/04/2013 18:34
Tank 4      BioDiesel
Alarm:      Stat.Leak Detection
Start Date: 26/04/2013 18:30:25
Confirmed:  26/04/2013 18:30:37
End-date:   26/04/2013 18:34:26
-----
```

E-mail example

```
Sent:      26 April 2013 21:15
From:      my-address@fafnir.com
To:        Dummy, Donald
Subject:    System: Test-System B19 26/04/2013; 20:10:27; Tank 4: BioDiesel, Stat.Leak Detection

System:    Test System B19
Event time: 26/04/2013 20:10:27
Alarm:     Tank 4: BioDiesel, Stat.Leak Detection
```

 Configuration menu

3.1.9 E-mail Alarm Recipients

Email Alarm Recipients

Main Window -> System functions-> Configuration -> E-mail Alarm Recipients

This function allows configuring the e-mail alarm recipients.

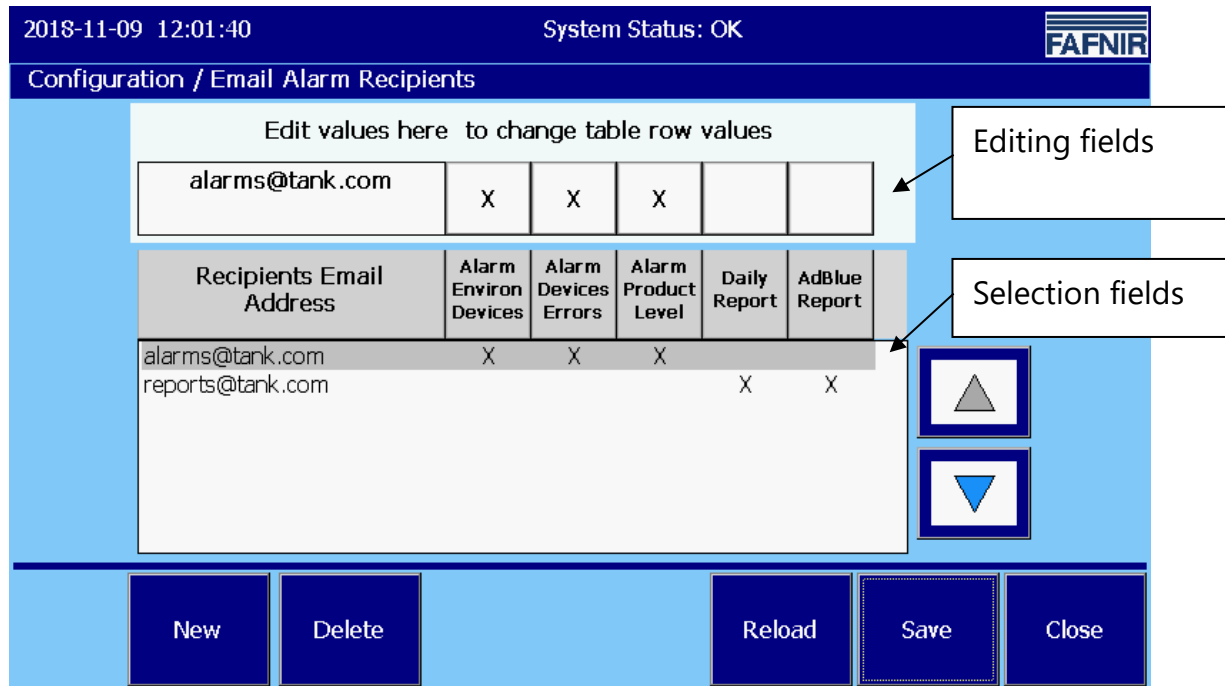


Figure 18: E-mail Alarm Recipients

There are five different event categories that can lead to sending an e-mail to specific recipients.

- Alarms of Environmental sensors ("Alarm Environ Devices")
- Alarms due to devices/probe errors ("Alarm Devices Errors")
- Product and Water level alarms ("Alarm Product Level")
- Daily reports ("Daily Report")
- AdBlue reports ("AdBlue Report")

Each e-mail recipient can be assigned a free selection of the categories (marked with "X" in the above graphic).

In the selection area, the e-mail recipients can be created or selected using the arrow keys. Tapping the e-mail field in the editing area opens the virtual keyboard and allows you to edit the e-mail address. When clicking on the event category fields, these are activated (X) or deactivated (empty field) for the respective recipient.

Alarm Environ Devices

All alarms of the environmental sensors with the exception of "non-readiness"

Alarm Devices Errors

All alarms of the sensors / devices that report a "non-readiness".

Alarm Product Level

All alarms of product and water level measurement



The e-mails of the Product Alarms "low" and "very low" are supplemented with a brief overview of the tank contents.

Example in "plain text" formatting (table format with Courier font):

```
Tank data dated 25/07/2012 09:40:44
=====
Tk      Product      Capacity      Ullage      Volume
              (L)           (L)          (L)
1:      Petrol        29100         12430.4     16669.6
2:      Super         29100         17692.0     11408.0
3:      Diesel        29100         17676.6     11423.4
4:      BioDiesel     29100         17661.2     11438.8
5:      Premium       9700          5883.5      3816.5
6:      Ultra         9700          8220.5      1479.5
```



The above shown time complies with the time of sending the e-mail. The time of the alarm and the time of sending may be apart some minutes, depending on when the e-mail could be sent.



For very large containers the volumes in the "tank report" are displayed without decimal places.

Daily Report

Fill levels at the configured logging time and deliveries from the logging times of the previous to the current day (see chapter "[Time-controlled Reports](#)").

AdBlue Report

are daily reports exclusively of AdBlue tanks.

Example e-mails:

Below examples are shown for each e-mail category.
In the row "Subject" the following details are shown:

- System Name
- Date of registration of the event (e.g. alarm start time)
- Type of event (device and alarm type / daily report)

Environmental: Interstitial – Product alarm

```
From: myID@myprovider.com
Sent: 20 January 2012 11:25
To: maintenance@mySiteService.com
Subject: System: FAFNIR B19 2012-01-20 11:23:43 Interstitial 1 Product Alarm
System Name: FAFNIR B19
Event time: 20/01/2012 11:23:43
Alarm: Interstitial 1 Product Alarm
```

Device Error: Interstitial - Probe, internal error

```
From: myID@myprovider.com
Sent: 20 January 2012 11:27
To: maintenance@mySiteService.com
Subject: System: FAFNIR B19 20/01/2012 11:25:28 Probe Interstitial 16, int. error
System Name: FAFNIR B19
Event time: 20/01/2012 11:25:28
Alarm: Probe Interstitial 16, internal error
```

Level alarm, Product low (Tank 1)

```
From: myID@myprovider.com
Sent: 20 January 2012 11:10
To: maintenance@mySiteService.com
Subject: System: FAFNIR B19 2012-01-20 11:08:44 Tank 1: Benzin, Product low
System Name: FAFNIR B19
Event time: 20/01/2012 11:08:44
Alarm: Tank 1: Benzin, Product low
```

Tank data dated 20/01/2012 11:09:30

```
=====
```

Tk	Product	Capacity (L)	Ullage (L)	Volume (L)
1:	Petrol	29100	12430.4	16669.6
2:	Super	29100	17692.0	11408.0
3:	Diesel	29100	17676.6	11423.4
4:	BioDiesel	29100	17661.2	11438.8
5:	Premium	9700	5883.5	3816.5
6:	Ultra	9700	8220.5	1479.5

Level alarm: Product very low

```
From: myID@myprovider.com
Sent: 20 January 2012 11:12
To: maintenance@mySiteService.com
Subject: System: FAFNIR B19 20/01/2012 11:09:41 Tank 1: Benzin, Product very low
System Name: FAFNIR B19
Event time: 20/01/2012 11:09:41
Alarm: Tank 1: Benzin, Product very low
```

(With table of tank data like the level alarm "Product low")

Level alarm: Water high

From: myID@myprovider.com
 Sent: 20 January 2012 11:14
 To: maintenance@mySiteService.com
 Subject: System: FAFNIR B19 20/01/2012 11:13:54 Tank 2: Super, Water high
 System Name: FAFNIR B19
 Event time: 20/01/2012 11:13:54
 Alarm: Tank 2: Super, Water high

Daily report and deliveries

From: myID@myprovider.com
 Sent: 20 January 2012 11:46
 To: maintenance@mySiteService.com
 Subject: System: FAFNIR B19 20/01/2012 11:45:13 Daily report & Deliveries
 System: FAFNIR B19 Daily report & Deliveries dated 20/01/2012 11:45:13

Tank data dated 20/01/2012 11:45:13

Tk	Product	Capacity (L)	Ullage (L)	Volume (L)	Vol.TC (L)	Prod.Level (mm)	Temp (°C)	Water level (mm)
1:	Benzin	29100	10191.6	18908.4	18982.5	1509.6	11.8	34.8
2:	Super	29100	9448.6	19651.4	19704.4	1559.6	12.8	34.3
3:	Diesel	29100	8705.6	20394.4	20424.5	1609.6	13.8	0.0
4:	BioDiesel	29100	9447.6	19652.4	19657.5	1559.7	14.8	34.9
5:	Premium	9700	2105.5	7594.5	7587.3	1779.4	15.8	30.7
6:	Ultra	9700	1968.6	7731.4	7714.8	1809.4	16.8	40.6

Tank data dated 20/01/2012 11:45:13, continued

Tk	Product	Density (g/L)	Density TC (g/L)	Density Temp. (°C)	Sump Density (g/L)	Sump Density TC (g/L)
1:	Benzin	-	-	0.0	-	-
2:	Super	-	-	0.0	-	-
3:	Diesel	845.5	844.2	13.8	845.6	844.4
4:	BioDiesel	-	-	0.0	-	-
5:	Premium	-	-	0.0	-	-
6:	Ultra	-	-	0.0	-	-

Alarm state dated 2012-01-20 11:45:13

Tk Alarm state
 1: OK
 2: OK
 3: Alarm
 4: Alarm
 5: OK
 6: OK

Deliveries from 2012-01-19 11:45 to 2012-01-20 11:45

Tk	Product	Start date	Stop date	Volume (L)	Vol.TC (L)
1:	Benzin	2012-01-20 11:10	2012-01-20 11:18	16729.5	16795.1
2:	Super	2012-01-20 11:15	2012-01-20 11:19	8243.4	8265.6
3:	Diesel	2012-01-20 11:15	2012-01-20 11:19	8971.0	8984.2
4:	BioDiesel	2012-01-20 11:15	2012-01-20 11:19	8213.7	8215.8
5:	Premium	20/01/2012 11:15	20/01/2012 11:19	3778,0	3774,4
6:	Ultra	20/01/2012 11:15	20/01/2012 11:20	3909,8	3901,5



3.1.10 Printer options (“Printer opt.”)



Main window -> System functions -> Configuration -> Printer Opt.

Function for configuration of the ticket-printouts.

Text entered in the ticket headers (L1 ... L4) is printed at the beginning of the printouts. Lines containing no characters are not printed.

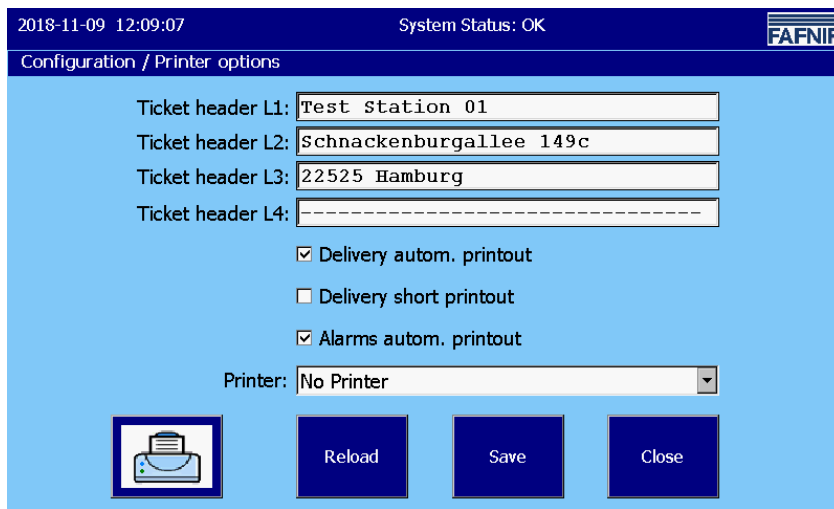


Figure 19: Printer Settings

The texts are entered using a virtual keyboard. Each line can contain a maximum of 32 characters.

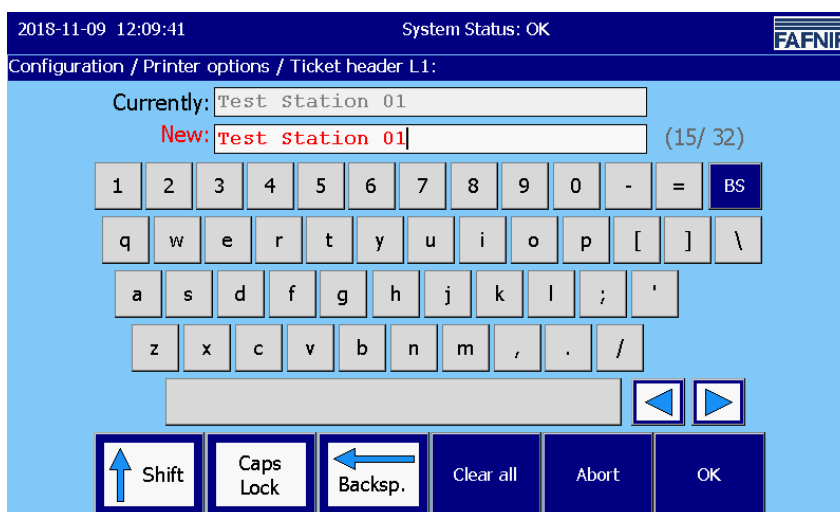


Figure 20: Printer Settings / Virtual Keyboard

Automatic Printout of Deliveries ("Delivery autom. Printout")

The data of the deliveries are printed automatically if this checkbox has been checked.

Delivery short printout

The data of the deliveries can also be printed in short form, if this checkmark has been checked.

```
Delivery      05/03/2010 13:26
Tank 4        BioDiesel
Start Date:  04/03/2010 15:47:06
End-date:    04/03/2010 15:48:14
Volume TC:   5236.4 Litres
Start Vol.TC: 1874.7 Litres
Stop Vol.TC: 7111.2 Litres
Volume:      5235.5 Litres
```

Automatic Printout of Alarms ("Alarms autom. printout")

Alarms are printed automatically if this checkbox has been checked.

Printer selection

The following printers are available for selection:

- SII-DPU (built in the VISY Command GUI):
This printer is to be set for the built-in ticket printer of the VISY-Command GUI
- Bixelon (external, VISY-View Touch):
this Printer is to be set for the connected external standard printer of VISY-View Touch.
- In the factory setting "No Printer" is specified.

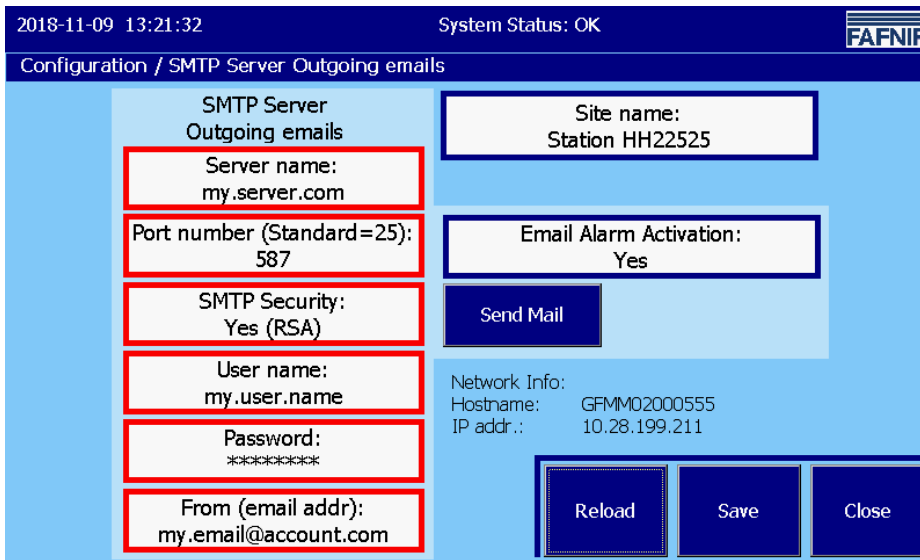
 [Configuration menu](#)

3.1.11 SMTP Server



Main window -> Server functions -> Configuration -> SMTP Server

In the "SMTP Server Outgoing E-mails" menu, the parameters for sending e-mails are set.



2018-11-09 13:21:32 System Status: OK FAFNIR

Configuration / SMTP Server Outgoing emails

SMTP Server Outgoing emails

Site name: Station HH22525

Server name: my.server.com

Port number (Standard=25): 587

SMTP Security: Yes (RSA)

User name: my.user.name

Password: *****

From (email addr): my.email@account.com

Email Alarm Activation: Yes

Send Mail

Network Info:
 Hostname: GFMM02000555
 IP addr.: 10.28.199.211

Reload Save Close

Figure 21: SMTP Server Outgoing emails

Network Info

The Network Info box displays the network settings for the device.

 *The configuration of the SMTP Server is only possible if the network settings (IP configuration) are completed.*





IP addr. (Network settings)

The IP address (IP addr.) is the device's IP4 address defined for the network. The IP address must be configured with the "Control Panel" according to the network requirements, see chapter [Contr.Panel-> Network Settings](#) . The IP address can be static or automatically assigned by DHCP protocol.

Host name

The host name is the device name defined for the network. The default name can be changed individually with the "Contr.Panel", see chapter [Contr.Panel-> Hostname](#).

Configuration of the SMTP server

-  *Activate the e-mail transmission only when all required configurations - as far as possible - have been done and tested.*
-  *For service work that possibly could cause alarms, a temporary de-activation of the e-mail transmission should be considered, in order to avoid unintended alarms in head quarter systems.*
-  *E-mails are sent in HTML and text formats. The according illustration depends on the e-mail client configuration (e.g., Microsoft Outlook).*
-  *All changes must be saved with the "Save" button. After saving, the e-mail settings are displayed in a confirmation window (see Email process).*

System Name

The system name should represent a unique (location) identifier of the installed system. It is part of the e-mails sent by the system.

Server name:

Login is generally required for access to the SMTP Server. You can obtain the login data from your Internet provider or network administrator. Enter the name of the SMTP Server here.

Port number:

Enter the number of the SMTP port here. Default value is "25" (unencrypted).

SMTP Security:

Select the degree of transmission security here. The secure procedures involve encrypted transmission. The following three options are offered: No security (plain text) / Security (yes, RSA) / Security (yes, DHE)

For encrypted transmission, select the option "Yes (RSA)" preferably.

Alternatively, you can select the "Yes (DHE)" option. In this variant, a complex, compute-intensive method for calculating the connection key is used. Under unfavourable conditions, the connection may be terminated by the remote station before the key can be provided.

-  *Not all providers offer encrypted transmissions.*

User name:

Here, enter the user name which is part of the registration data.

Password:

Here, enter the user password (part of the login data).

From (email addr):

Enter the sender's e-mail address here.

Email Alarm Activation:

This setting activates or deactivates the e-mail function.

Send mail:

Test function (see the following figure) for checking the e-mail transmission. The function "Email Alarm Activation" is activated during the test.

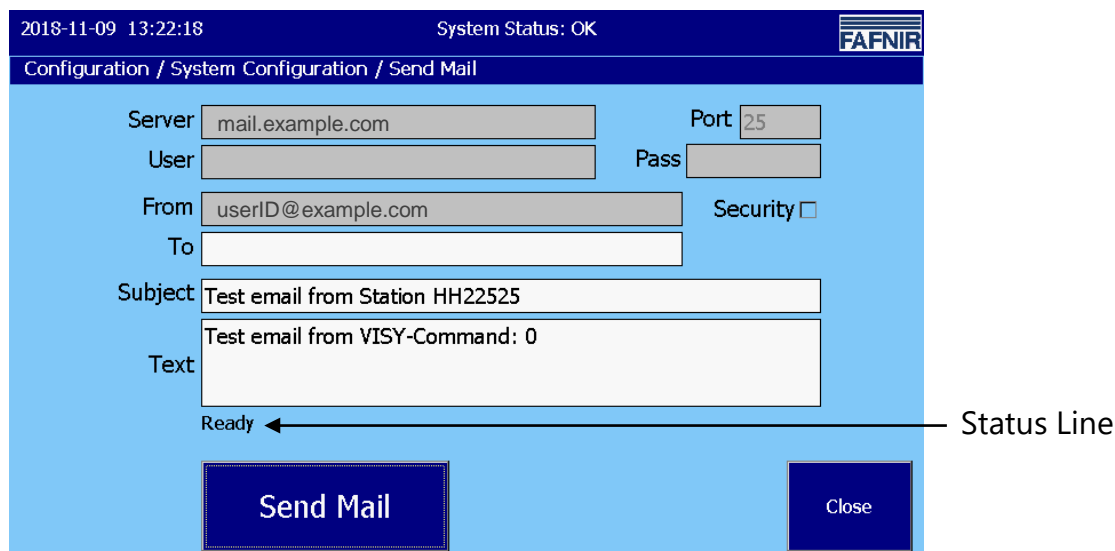




Figure 22: System Configuration / Send Mail

The greyed boxes contain the values saved under "SMTP Server".

The white-shaded boxes can be edited; enter your test data here. The fields "To", "Subject" and "Text" contain an editable text.

The status line shows messages of the transmission. If the settings are correct and the network connection is operational, the e-mail will be sent without an error message.

 Depending on the provider and the network capacity, it may take a few minutes before the recipient receives the e-mail.

 The e-mails are sent in "Text" format (in tabular form with non-proportional font) and "HTML" format (in tabular form) and are displayed according to the used e-mail program.

Sample configuration with GMX

1. First create a GMX account with User Name (GMX e-mail address) and User Password (GMX Password).
2. Configure the SMTP Server (see figure 21):

Server name:	mail.gmx.net
Port number:	587
SMTP Security:	Yes (RSA)
User name:	GMX e-mail address
Password:	GMX Password
From (email addr):	GMX e-mail address
Email Alarm Activation:	Yes

3. Add e-mail recipient -> chapter: E-mail Alarm Recipients

Email process

After saving the SMTP configuration, the changed parameters are adopted by the email process and then displayed for a few seconds.

Example: Configuration with provider "gmx".

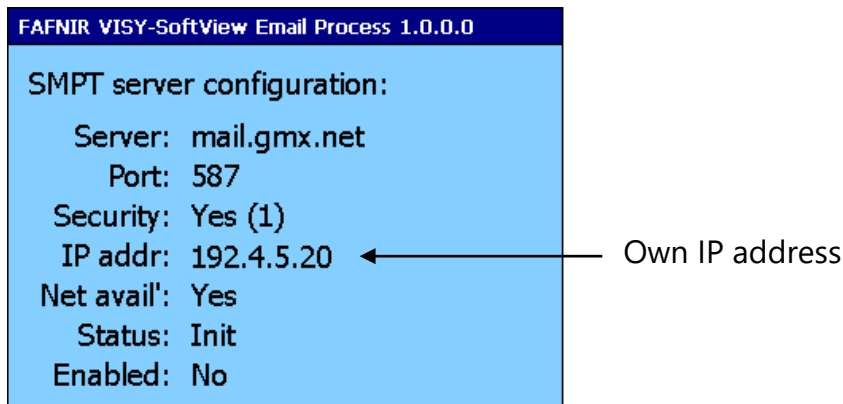





Figure 23: Email Process - Display of configuration and status after a change

 *It may take a few seconds for this to display.*

 *The email process tries to determine if the device is connected to a network. If correctly connected and configured, in the line "Net avail." (Network available) "Yes" is displayed.*

 *For e-mail delivery, your own IP address must not be the "localhost" IP address 127.0.0.1.*

3.1.12 Password



Main window -> System functions -> Configuration -> Password

With the password function two options for configuration are available:

- Password change
- Password protection for main screen

A sequence of one (1) to a maximum of twelve (12) numbers is accepted as password.



Figure 24: Password



*The factory set password is "22765".
If the password has been changed and forgotten, a new password may be requested from FAFNIR.*

Change Password

The password can be entered using the numeric keys or the lateral function keys. An asterisk character "*" is displayed for each digit of the password.

In both input lines the password must be identically.

The input line can be selected by tapping on. The "active" input line is displayed with a slightly lighter background and a pointed bracket "<" on the right side. The cursor character "|" flashes at the input position. The input field "Password" is displayed in red characters as soon as a character has been changed.

Password protection for main window

This function enables protection of the functions in the main window, except the functions "Tanks", "Home", "FAFNIR", "Clean" and "Workmode".

After tapping the "Main window password protection" key, the password protection function can be selected with the arrow keys or by "Tapping" (Yes / No) and will be confirmed with the "OK" key. The factory setting is "No".

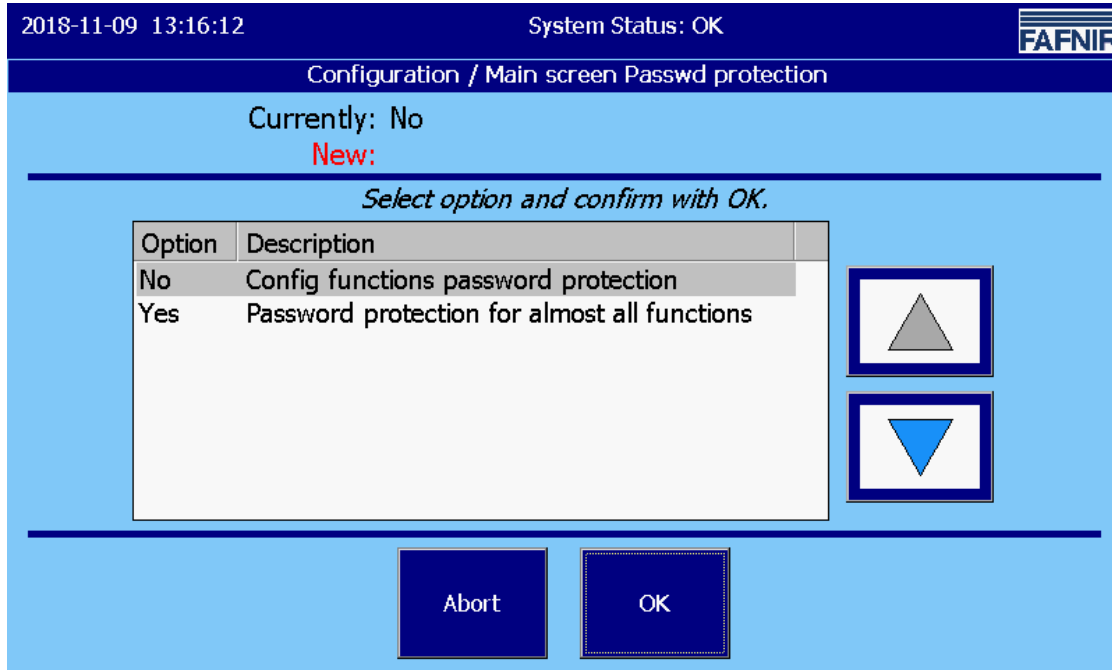


Figure 25: Password / Main window password protection





3.1.13 Logging



Main window -> System functions -> Configuration -> Logging

This function is used to configure long-term recordings with VISY-SoftView. The configuration parameters to be set here determine the time-controlled long-term recordings for tank inventory data, delivery data and alarms.

 *The prerequisite for logging is an SD card with a maximum of 2 GB of memory, which is plugged into the back of the embedded computer ("CUPID"). To do this, the housing of the VISY-Command GUI / VISY-View Touch must be opened.*

 *After installation, the SD card is to be considered as a built-in hard disk and must not be removed during system runtime.*

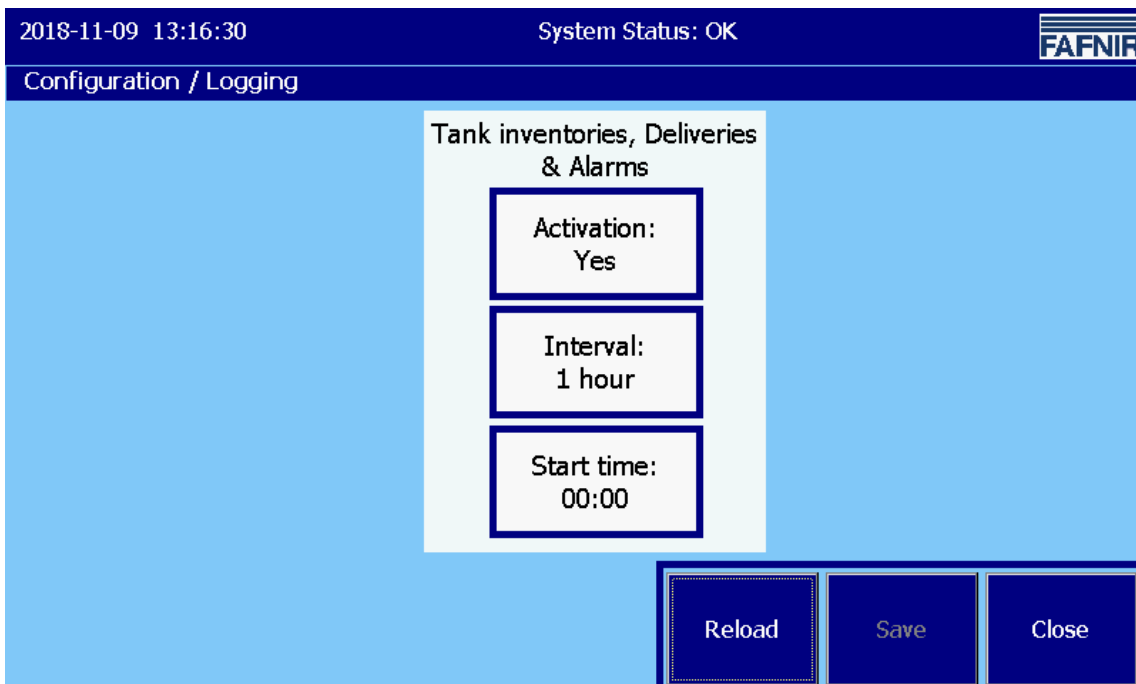


Figure 26: Logging

Activation: Activation / de-activation of time-controlled recording

Interval: time interval of the recordings

Start time: Start time of the recording intervals (each on the hour)

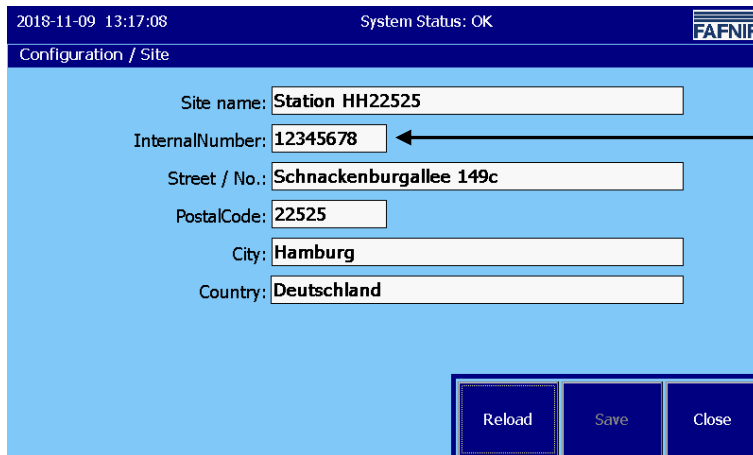


3.1.14 System



Main window -> System functions -> Configuration -> System

Details for identifying the system: Name, postal address



The screenshot shows a configuration window for a FAFNIR system. The window title is 'Configuration / Site'. The system status is 'OK' and the date/time is '2018-11-09 13:17:08'. The form contains the following fields:

Site name:	Station HH22525
InternalNumber:	12345678
Street / No.:	Schnackenburgallee 149c
PostalCode:	22525
City:	Hamburg
Country:	Deutschland

At the bottom right, there are three buttons: 'Reload', 'Save', and 'Close'.

Internal Number:
Facility / Object number
-> important for the logging!

Figure 27: Details for identifying the system


Site Name

Name or name of the system, the (station) object

Internal name (facility / object number)

 *Important for the logging!*

The "Internal No." entered here is used to uniquely identify the station / petrol station and is used in the "Logging" function and the Oil Separator logbook, e.g. as part of the file name for the log files stored permanently on the SD card.

 *The value set here once should not be changed afterwards.*

Address, postal

With the usual information to

- Street and house number.
- Postal Code
- City and Country



3.1.15 Time-controlled reports



Main window -> System functions -> Configuration -> Report Times

This feature allows you to enable reports at specific times.

2018-11-09 13:23:29 System Status: OK

Configuration / Report Times

Edit values here to change table row values

No.	Active	Time	Print Report	Daily Report Email	AdBlue Report Email
0	X	06:00	X		
1	X	15:30		X	X

Buttons: New, Delete, Reload, Save, Close

Figure 28: Time-controlled reports

There are following options for effecting the reports

- Printout of reports
- Daily report e-mails
- AdBlue report e-mails

which can be selected individually or together for an order.

Jobs are created with the "New" button and can be selected for editing using the arrow keys.

Tapping the fields in the edit area allows the jobs and reports to be activated (X) or disabled (empty field) and times set for execution.



3.1.16 Oil separator



Main window -> System functions -> Configuration -> Oil Separator

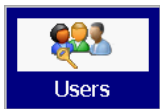
For the use of VISY-SoftView with Oil Separators, see following documentation:



VISY-SoftView Oil Separator, art. no. 350193

 Configuration menu

3.1.17 Users



Main window -> System functions -> Configuration -> Users

The "Users" function belongs to the use of VISY-SoftView with Oil Separators.

This function manages the users who can make entries in the Oil Separator Operating Diary, see the following documentation:



VISY-SoftView Oil Separator, art. no. 350193

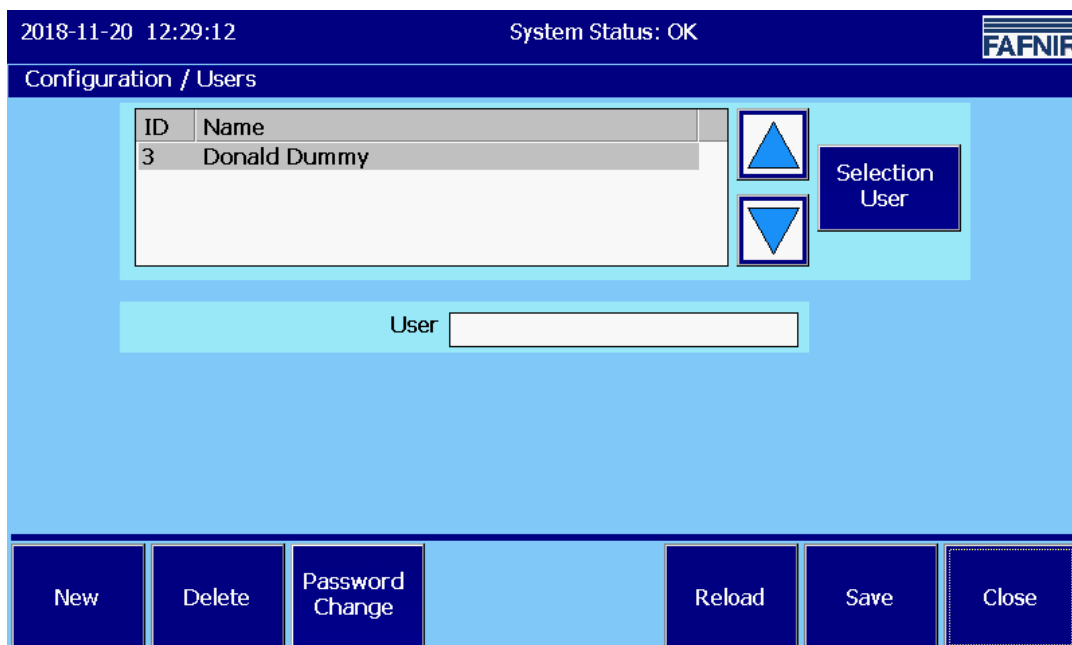


Figure 29: User

This menu includes the following functions:

- Add new users with the "New" button
- Delete already existing user with the "Delete" button
- Change the user password with the "Password change" button



3.1.18 Control panel ("Ctrl panel")



Main window -> System functions -> Configuration -> Ctrl panel

After tapping the "Ctrl panel" button, the Windows CE Control panel opens.

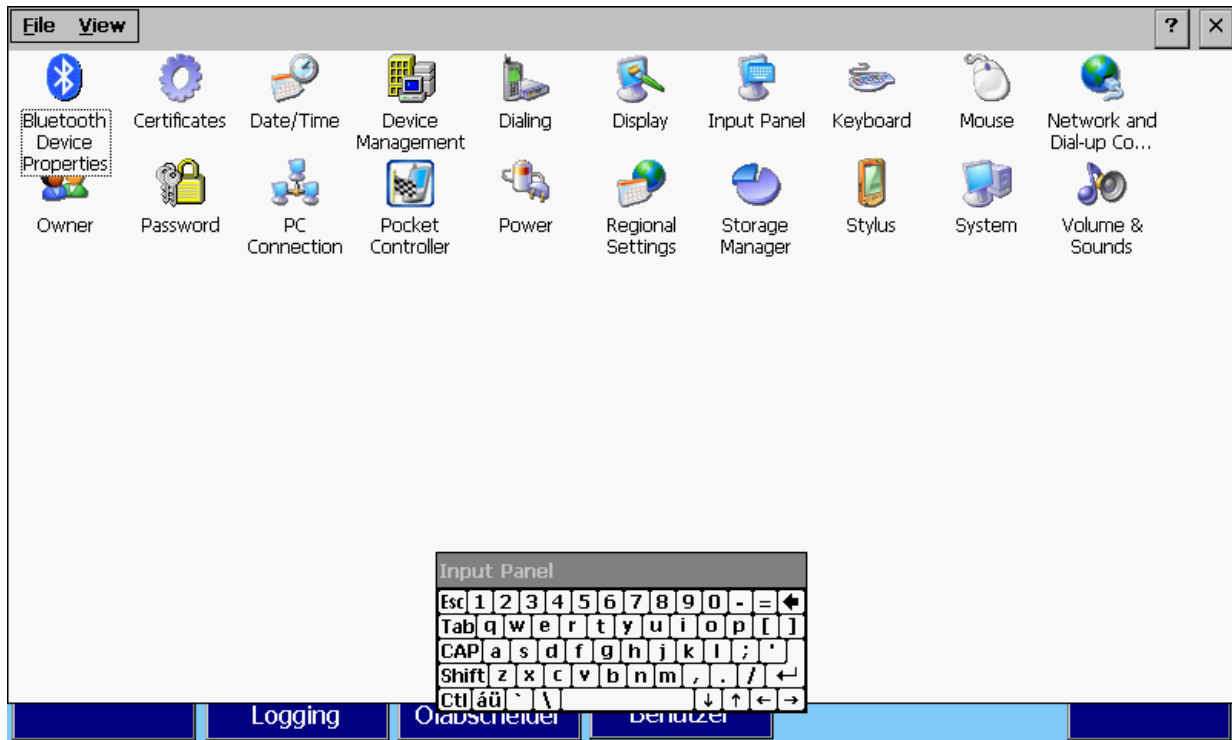





Figure 30: Windows CE Control Panel

 *The default factory parameters have a system-wide impact and may only be changed if the user is fully familiar with the effects.*

 *VISY-SoftView is displayed again when the "Control Panel" is closed by tapping on the "X" in the menu bar.*

 *Changes in the Windows CE "Control Panel" must be saved in the VISY-SoftView configuration menu with the function "Save Ctrl"*



Host name



Contr.Panel > System > Device Name > Device Name

The host name is the device name defined for the network.
The default name can be changed individually (without spaces).

- (1) Open the "System Properties" window by double-click on the "System" button
- (2) The device name (host name) is entered in the "Device Name field".
- (3) Confirm by tapping the "OK" button

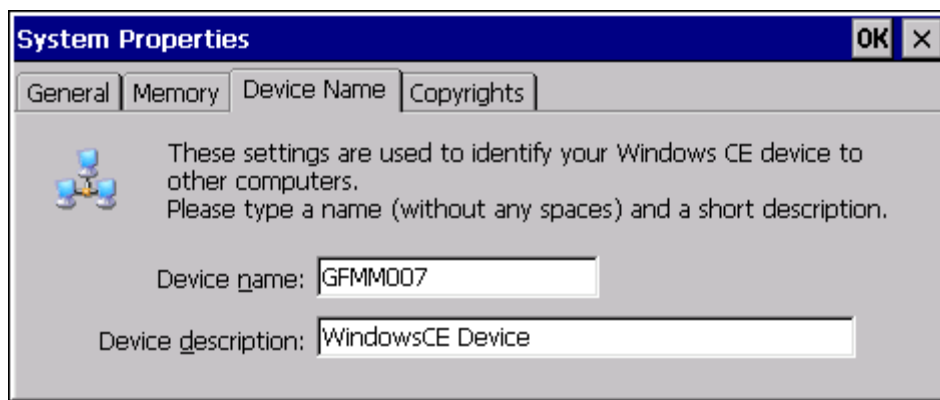


Figure 31: System Properties



Confirm the configuration by tapping the "OK" button in the menu bar, close the Contr.Panel by tapping the "X" in the menu bar, save the changes in the configuration menu with "Save Ctrl".



Network settings (IP configuration)



Contr.Panel > Network and Dial-up Connections > FEC1

To identify your device in the network IP addresses must be assigned.

In the Contr. Panel open the "Network and Dial-up Connections" and then "FEC1" by double-clicks.

In the window "FEC Ethernet Driver Settings", select the tab "IP Address" .



The IP address entered here (factory setting) must be adapted to your network.

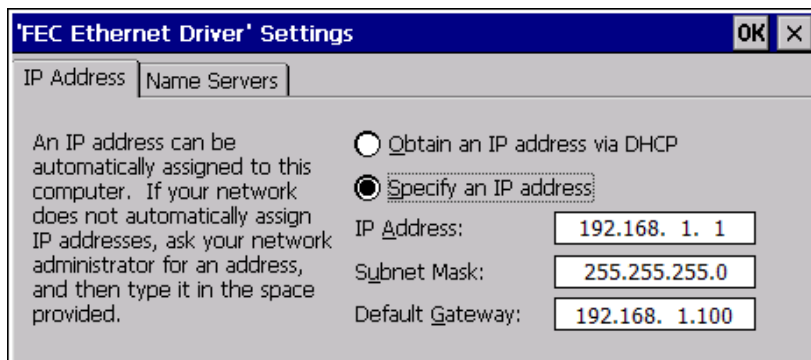


Figure 32: Network settings, IP address



The factory setting is saved as:

IP address 192.168.1.1

Subnet Mask 255.255.255.0

Gateway 192.168.1.100

Enter the IP address valid for your network here ("Specify an IP address") or select the automatic assignment via DHCP ("Obtain an IP address via DHCP") depending on the configuration of your router.



Your IP address is usually obtained from your network administrator. IP addresses may exist only once in the network. Assigning the same IP address to more than one system in the network can cause major network problems.

"Name Servers" tab

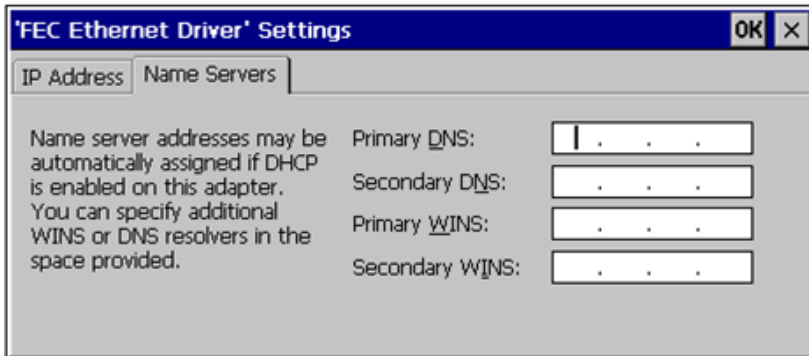


Figure 33: Network settings, DNS server addresses

The "**Name Servers**" tab is used to set the IP address(es) of the DNS servers.

When using the DHCP protocol, the IP addresses of the DNS servers are automatically assigned.


Further DNS server addresses may be entered in this input field.



Confirm the configuration by tapping the "OK" button in the menu bar, close the Contr.Panel by tapping the "X" in the menu bar, save the changes in the configuration menu with "Save Ctrl".



Turn off the backlight

 *By default, the backlight is on.*

The backlight can be turned off automatically in stand-by mode. For this, the following settings are required:

- (1) Double-click on the "Power" button opens the window "Power Properties".
- (2) In the "Schemes" tab, the time is set for switching to stand-by mode. Enter the following:
 - "AC Power" in the field "Power Scheme"
 - Desired time in the field "Switch state to User Idle" (user stand-by)
 - "Never" in the field "Switch state to System Idle"
 - "Never" in the field "Switch state to Suspend"

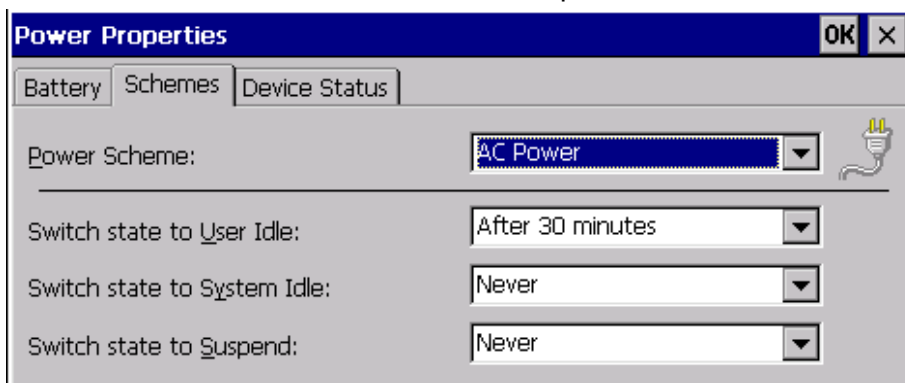


Figure 34: Sleep mode settings

- (3) Confirm by tapping the "OK" button
- (4) A double-click on the "Display" button opens the window "Display Properties".
- (5) In the "Backlight" tab the time for automatic deactivation of the backlight in stand-by mode is activated and selected. Enter the following:
 - Tick for the desired operation: "Automatically turn off backlight ..." in battery mode and / or mains operation
 - Select the desired time when the display should switch off ("Turn off after ...").
- (6) Confirm with tapping the "OK" button and save the changes in the VISY-SoftView configuration menu with "Save Ctrl"

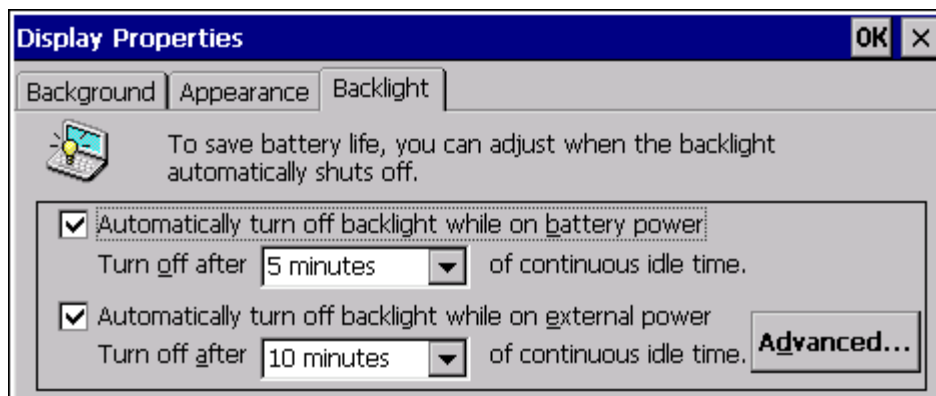




Figure 35: Display Settings - Backlight (off)

 *If the device is now in standby mode for 40 minutes (as in the example 30 min. + 10 min.), the backlight switches off automatically. The backlight switches automatically on again when the touch-screen monitor is pressed, or when signals come from the USB sensor (Truck Drv Display).*

 **Confirm the configuration by tapping the "OK" button in the menu bar, close the Contr.Panel by tapping the "X" in the menu bar, save the changes in the configuration menu with "Save.Ctrl".**



3.1.19 Save Ctrl



Main window -> System functions -> Configuration -> Save Ctrl

This function is used to save the settings configured in the control panel permanently. Unsaved changes will be lost when the display module is restarted.



4 List of figures

Figure 1: Password entry for configuration menu	6
Figure 2: Configuration Menu	7
Figure 3: Products	7
Figure 4: Products / colour table	8
Figure 5: Products / Colour - RGB.....	8
Figure 6: Volume	9
Figure 7: Messages at successful software update.....	10
Figure 8: Tank options.....	11
Figure 9: Tank Options / Tank Shape.....	12
Figure 10: Language.....	13
Figure 11: Database maintenance.....	14
Figure 12: System options.....	15
Figure 13: Static Leakage Detection.....	16
Figure 14: Static Leak Detection, Date / Day	17
Figure 15: Static Leak Detection / Execution Time	17
Figure 16: Static Leak Detection / Duration	18
Figure 17: Static Leak Detection / Alarm limit value	18
Figure 18: E-mail Alarm Recipients.....	22
Figure 19: Printer Settings.....	26
Figure 20: Printer Settings / Virtual Keyboard.....	26
Figure 21: SMTP Server Outgoing emails.....	28
Figure 22: System Configuration / Send Mail.....	30
Figure 23: Email Process - Display of configuration and status after a change.....	31
Figure 24: Password	32
Figure 25: Password / Main window password protection.....	33
Figure 26: Logging.....	34
Figure 27: Details for identifying the system	35
Figure 28: Time-controlled reports.....	36
Figure 29: User	38
Figure 30: Windows CE Control Panel	39
Figure 31: System Properties	40
Figure 32: Network settings, IP address	41
Figure 33: Network settings, DNS server addresses	42
Figure 34: Sleep mode settings	43
Figure 35: Display Settings - Backlight (off)	44

Blank Page

Blank Page



FAFNIR GmbH
Schnackenburgallee 149 c
22525 Hamburg, Germany
Tel.: +49 / 40 / 39 82 07-0
E-mail: info@fafnir.com
Web: www.fafnir.com
