

VISY-X

VISY-Command GUI Retrofit Display



Version: 1
Edition: 2022-09
Art. no.: 350381

Table of Contents

1	Overview	1
2	Scope of Delivery	2
3	Installation	3
3.1	VISY-Command GUI with Front Plate	3
3.2	Front Plate Dismantling	4
3.3	GUI Display Mounting	5


1 Overview

VISY-Command GUI is the evaluation unit available with an integrated display that shows locally the current tank data, delivery data and various alarms that are recorded by the **VISY-X system**.

This manual describes how to retrofit the **GUI display** to a VISY-Command GUI with front plate using the conversion kit.

The conversion kit can be ordered at FAFNIR with article number **902000**.

2 Scope of Delivery

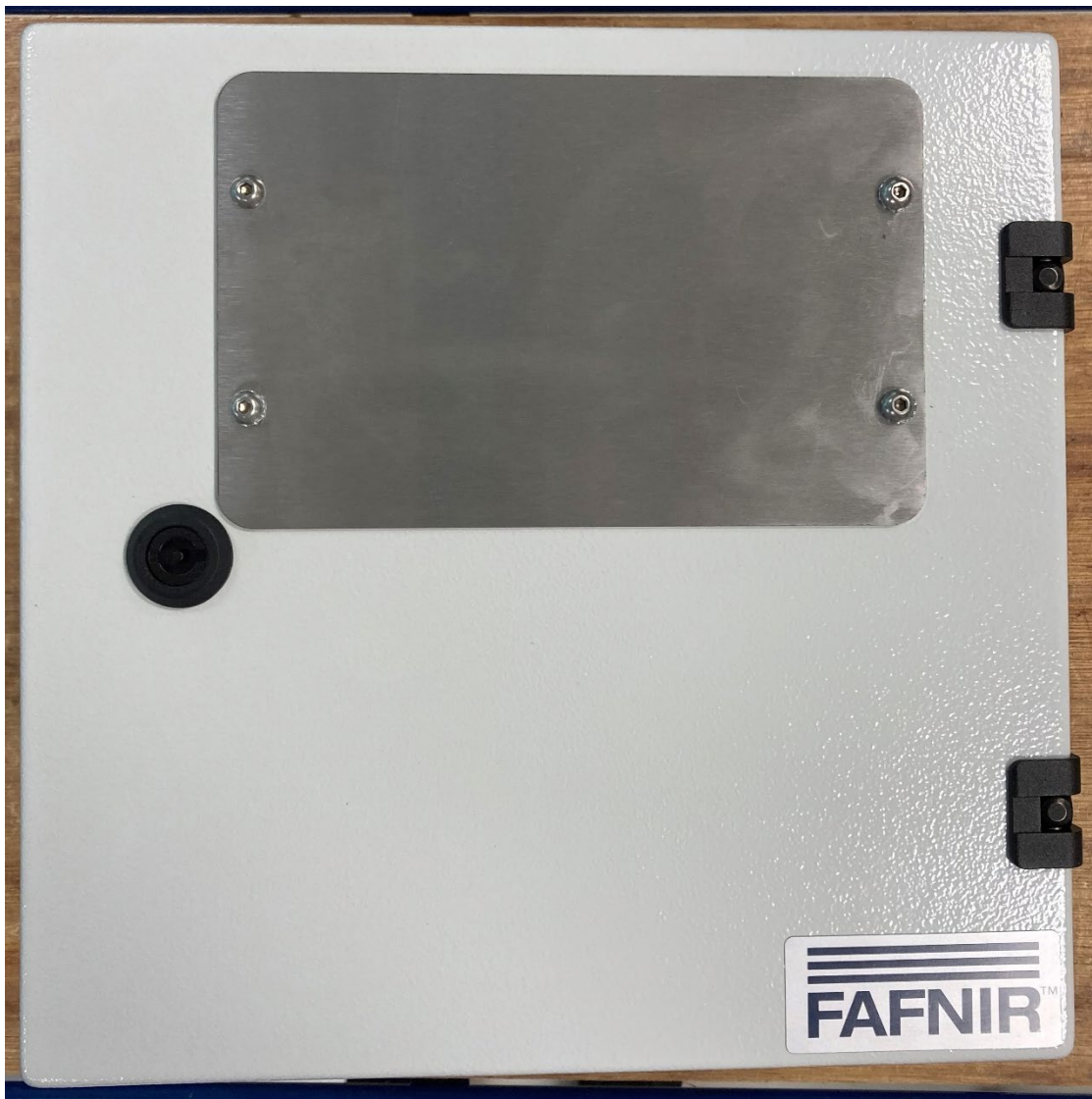
 A photograph of a rectangular display unit, likely a GUI display, mounted in a white plastic frame. The display itself is dark and appears to be a screen, possibly showing some faint, abstract patterns or reflections. The frame is made of white plastic and has a slightly raised, rectangular shape.	GUI Display <ul style="list-style-type: none">• Display for VISY-Command GUI fixed in a plastic frame
	Cable ties

3 Installation



Disconnect the VISY-Command GUI from power supply before opening the housing and protect it against reconnection, as well as determine the absence of voltage on all poles.

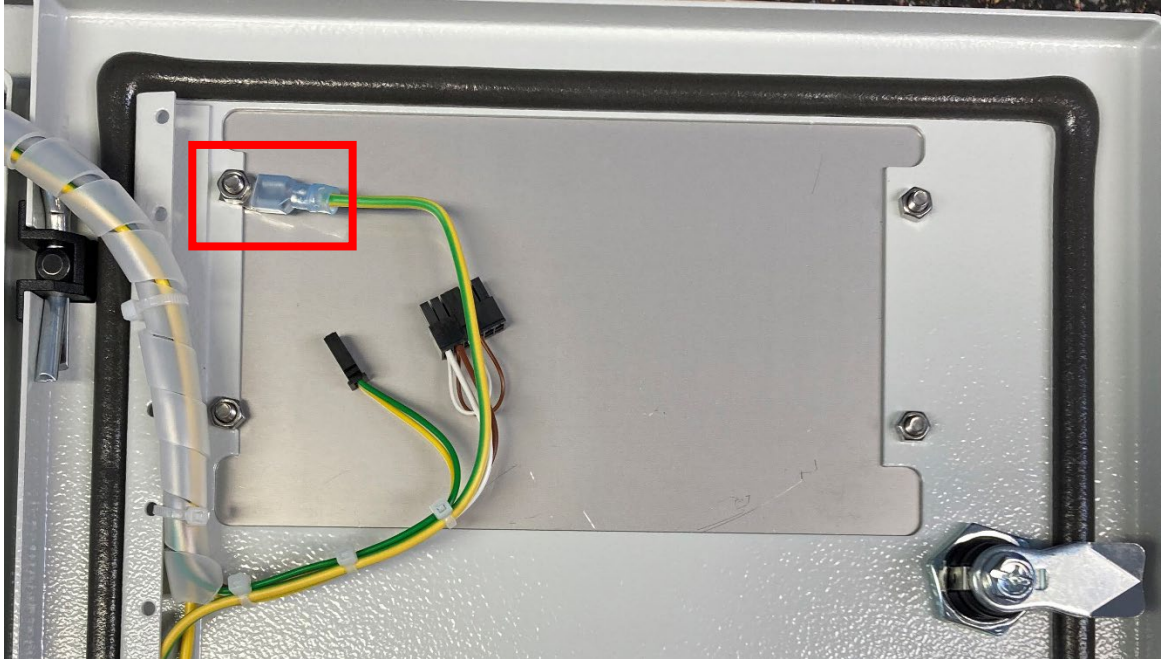
3.1 VISY-Command GUI with Front Plate



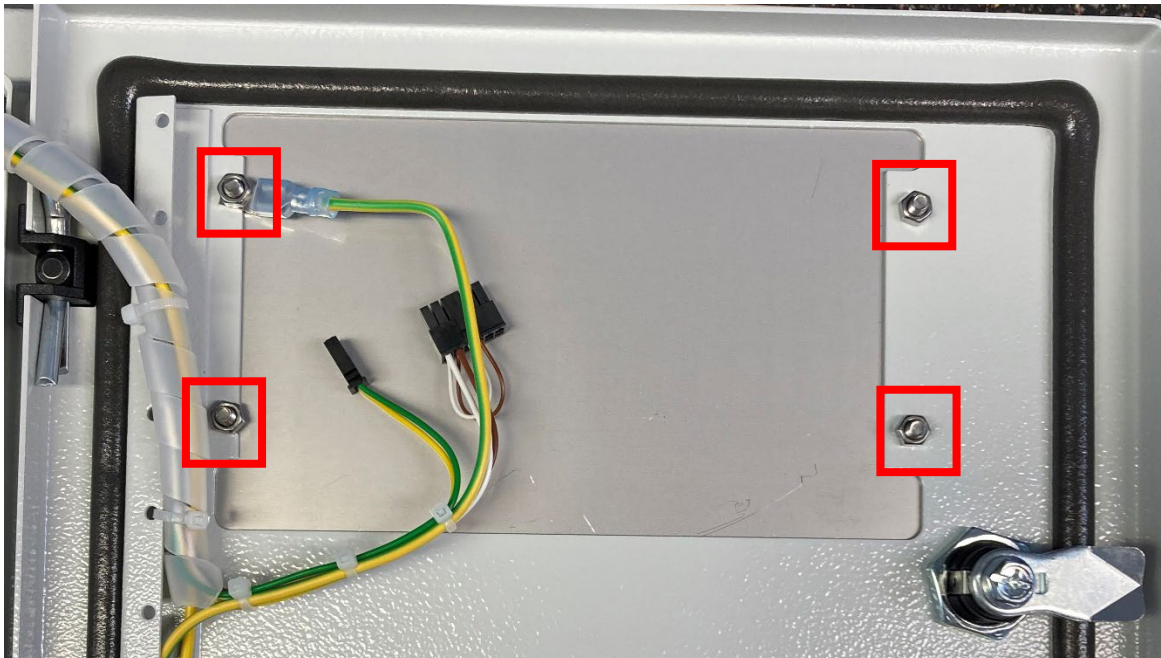
- (1) Unlock the VISY-Command GUI with the housing key and open the housing door.

3.2 Front Plate Dismantling

- (1) Unplug the earthing cable connected to the nut of the front plate's backside.

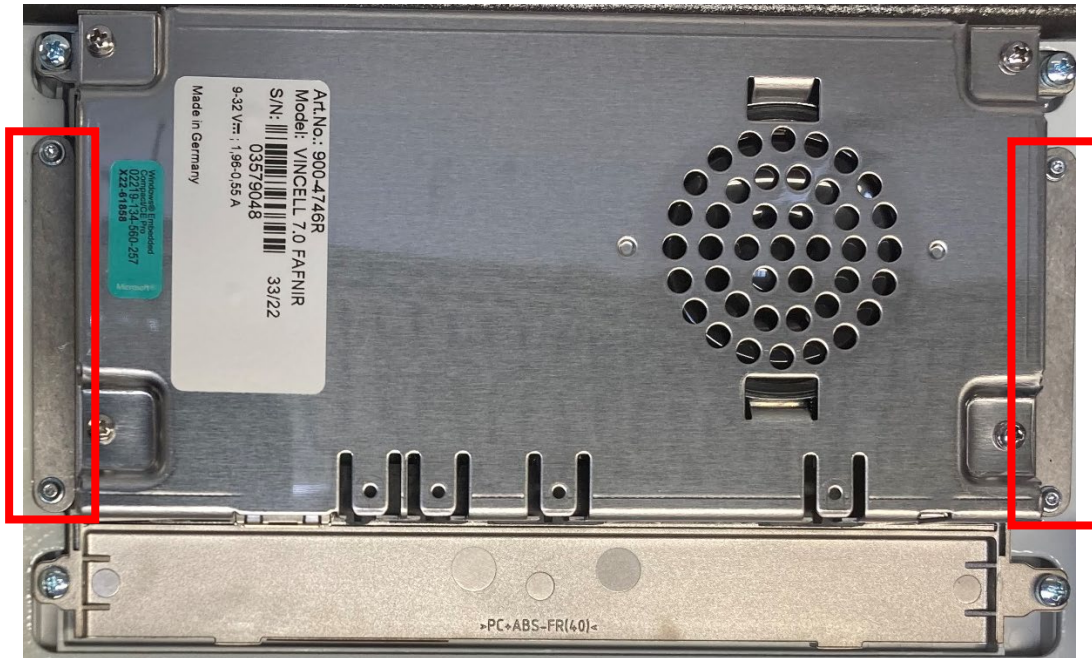


- (2) Remove the 4 nuts from the backside of the plate and remove the plate completely from the VISY-Command GUI.

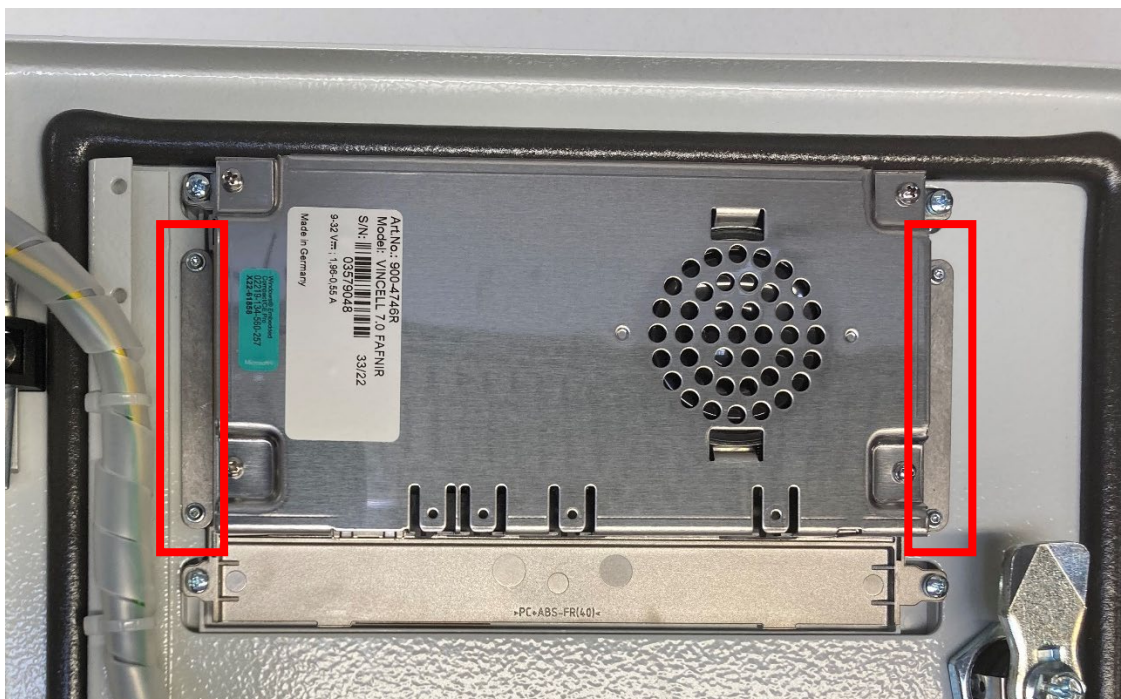


3.3 GUI Display Mounting

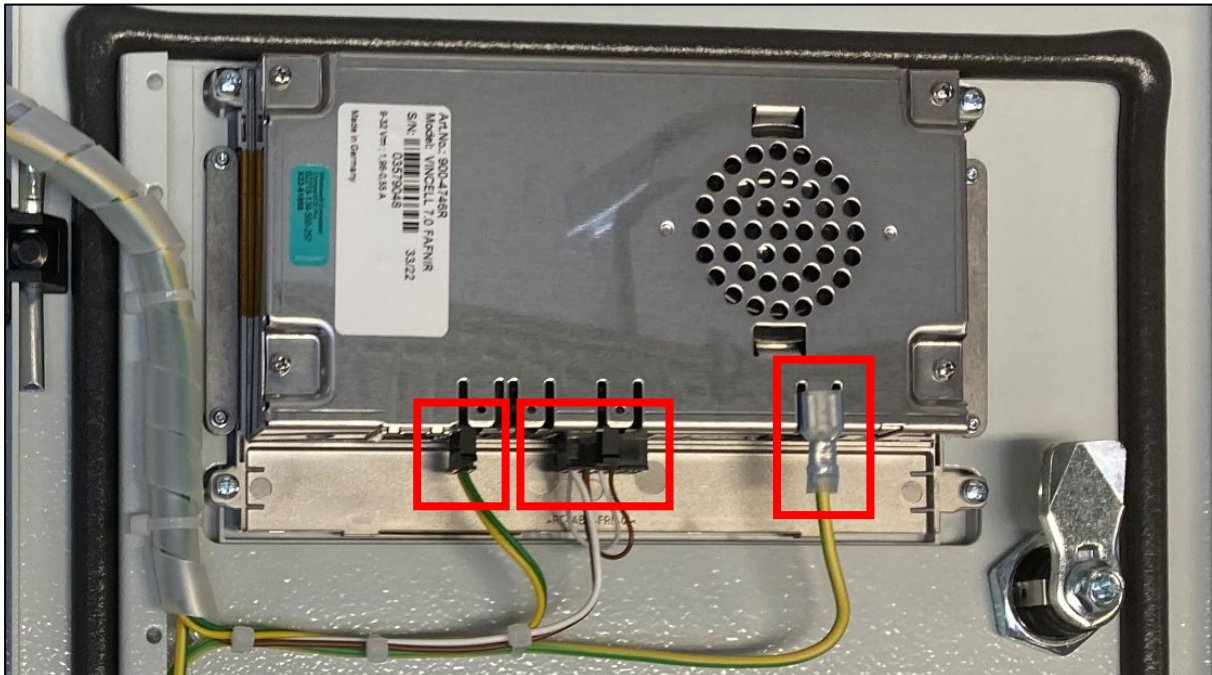
- (1) Unscrew the 2 metal plates connected to the side of the display and keep it aside.



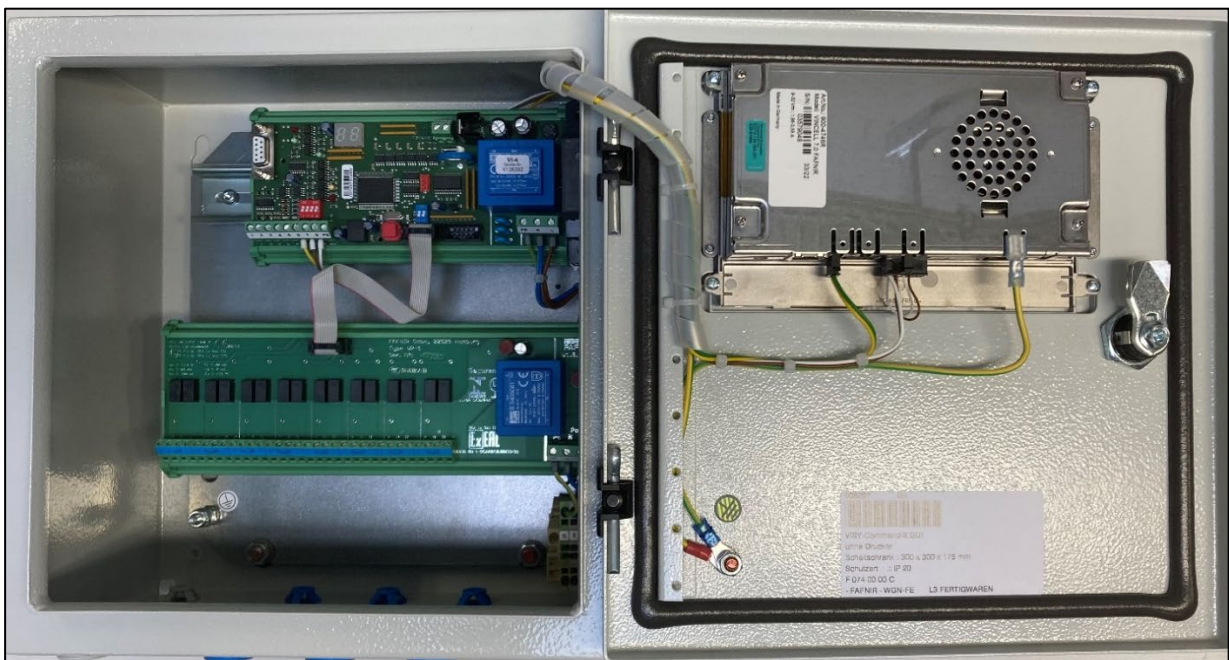
- (2) Carefully insert the new display into the VISY-Command GUI door and align it properly with the door. Now place the 2 metal rods plates on either side of the display and screw them onto the door so that the display is fixed to the door.



(3) Connect the cables to the display as shown below



(4) Final result



All cables must be secured so that they cannot lie on or fall onto the VP board.

(5) Close the housing door of the VISY-Command GUI and lock it with the housing key.

(6) Mounting of the GUI display to the VISY-Command GUI is now completed

Blank Page



Blank Page

Blank Page

FAFNIR GmbH
Schnackenburgallee 149 c
22525 Hamburg, Germany
T: +49/40/39 82 07-0
E-mail: info@fafnir.com
Web: www.fafnir.com
