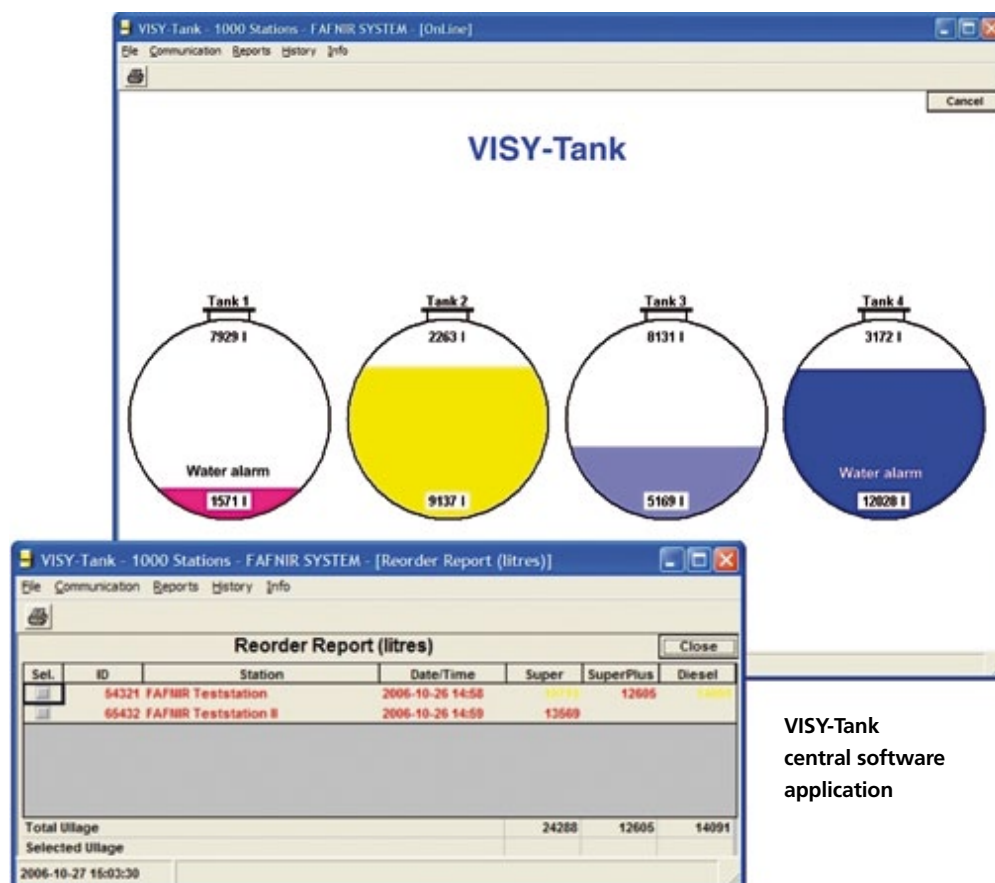


# VISY-Tank

## Central Software Application



VISY-Tank  
central software  
application

VISY-Tank is a software application for monitoring and recording data from tanks at petrol stations, fuel depots, etc.

It is the central program for long distance scanning by petrol stations.

### Features of FAFNIR technology

- Online graphical overview of a petrol station's tank contents
- Tank contents displayed in litres
- Display of product temperature and water level
- Delivery demand breakdown by region
- Tabular and graphical display of historical data
- Calculation and display of time to depletion of existing tank content
- Communication with the VISY-Command measurement analysis unit and the VISY-Monitor software application
- Three separate channels for connection by different communication links: GSM, modem or Internet
- Supports the most common tank level gauging
- Fastest viewing speeds (@ VISY-X System via LAN < 3 s)
- Runs on Windows NT/2000/XP/VISTA/Win7

**Function**

VISY-Tank is the optimum software application for fuel tanker resource management. By (W)LAN, GSM or modem link, it compiles all the information from the various petrol stations. With access to three separate communication channels, it is possible to select a different communication type for each channel [GSM, modem and (W)LAN]. This means that a heterogeneous network with different connections can be fully managed by VISY-Tank.

The software application is capable of managing up to 1,000 stations distributed across up to 100 regions. On receipt of data, VISY-Tank automatically prints out a demand report (by station, by region or overall).

**Data Management**

- » Volumetric representation of tank contents
- » Product temperature
- » Spare capacities
- » Tank and product name
- » Water level
- » Online tank display
- » Alarm messages and logging
- » History logging

**Minimum System****Requirements**

- » CPU 700 MHz
- » RAM 512 MB
- » Spare hard drive capacity for VISY-Tank software application: 30 MB
- » Windows 2000 Professional with SP4, Windows XP Professional with SP2 or Windows Vista with SP1, Win7